

CD Library II (DC-300)

For Windows and Mac



1997-2003 Dacal Technology Corp. All Right Reserved.

No. 2-1, Lane 1206 Chung-Cheng Road

Chung-Ho City Taipei Taiwan 235

www.dacal.com.tw

CD Library is registered trademarks or trademarks of Dacal Technology Corp. in Taiwan and/or other countries.

Macintosh, Mac, QuickTime is registered trademarks or trademarks of Apple Computer Inc. in United States and/or other countries

FileMaker is registered trademarks or trademarks of FileMaker Inc.

Windows OS is registered trademarks or trademarks of Microsoft Corp.

Content

Welcome to CD Library	1
Basic Knowledge	1
About this guide	2
Customer Support	2
Components in the box:	2
Computer System Requirement	2
Operating System Requirement	2
Safety Precautions	3
Hardware Installation	3
Test After Installation	5
Stand-Alone Machine Operation	5
Display Screen	5
Lock	6
Trouble Shooting	6
Software Guide for Windows O/S	
Software Installation	10
Installation Guide	10
Software Operation	10
Warning Sign	11
Command	14
Backup Database	14
Restore Database	15
CD Edit	15
Acquire	16
Recently Used	16
Print	16
Exit	16
Function	17

Power On	17
Power Off	17
Reset	17
Set	18
Setup	18
Swap Device ID	19
Password	20
Multi selection	20
Panel	21
Add/Edit	21
Search	22
Content	23
Remark	24
Preview	24
Software Guide for Macintosh O/S	27
Software Installation	27
OPERATION SKILLS	28
Starting Software	28
Input discs information	30
CD/DVD Storing	40
CD/DVD Searching	40
CD/DVD Retrieving	44
Printing	47
Functions	48
Other Functions	50
Change Password	50
BackUp Database	51

CD Library II

(DC-300)

Hardware Manual

Warning!!

This manual provides essential information for the protection of the user and others possible injury and property damage. Please read this manual before you use it. Always follow the instructions whenever using this product to prevent any possible injury and property damage.

Welcome to CD Library, the CD storage device world!

Thank you for purchasing CD Library II. The CD Library II, a CD/DVD storing and retrieving system, can be controlled by PC with USB interface. The included software is designed for easy and fast searching management. **Reading this manual is required before using CD Library.**

Basic Knowledge

- PC controls CD Library II by USB interface. Using the included software to manage the machine would be a simple, fast, and efficient method.
- 150 CD/DVD can be stored in a CD Library II machine. By using USB interface, one computer can connect up to 127 machines at the same time. Thus, you can store 19050 CDs/DVD for maximum.
- The enclosed software 「CD Library for Windows」 has great function to support you to manage your CDs. You can search the database by multiple ways.
- You can retrieve the name of the singers and name of the songs by using our software for your music CDs. This information can download from Internet. The software will save the information into the database. (Please visit www.cddb.com for details if necessary)
- Images and short movies can be recorded in the software. When you don't know the name of the discs, they can search CD/DVD in this area. (This function is only available in Mac Version).

About this guide

This manual provides essential information for the protection of the user and other possible injury and property damage. Please read this manual before you use it. Always follow the instructions whenever using this product, to prevent any possible injury and property damage.

Customer Support

Customer services: csc@dacal.com.tw

Technical Support: support@dacal.com.tw

Components in the box:

Please make sure the following goods in the package. Contact your local dealer if you have found anything missing:

- CD Library II Machine 1 pc
- CD Library software 1 pc
- AC adaptor 1 pc
- USB cable 1 pc
- User Manual 1 pc
- Management Form 1 pc
- Key 2 pc

Computer System Requirement

- An Intel-compatible Pentium 90 or higher
- 64 MB of RAM or higher
- Free space of 20MB for Hard Disk
- A CD-ROM or DVD Drive

Operating System Requirement

Windows 98SE, ME, 2000 Professional, XP

Mac OS 10.2.2 or higher

Note: CD Library software only works in Administrator mode in Windows 2000 and XP. Since Windows 95 (Version A)/NT 4.0 does not support USB interface, CD Library software can not be used in these 2 version of Windows.

Safety Precautions

This product is designed by well consideration of safety. However, a fire or electric shock will occur due to misuse. To prevent these unexpected situations happen, please must obey the following rules:

- When you don't understand some of these instructions, please stop to use this product. Please contact your local dealer nearest you.
- Please stop using the product when you find any problem.
- If you have found any strange things or rupture of electric wire, you must stop to use this product and contact your local dealer.
- IF you have found any weird sound, smell, or smoke, unplug the adaptor immediately. Turn off the power and contact your local dealer.

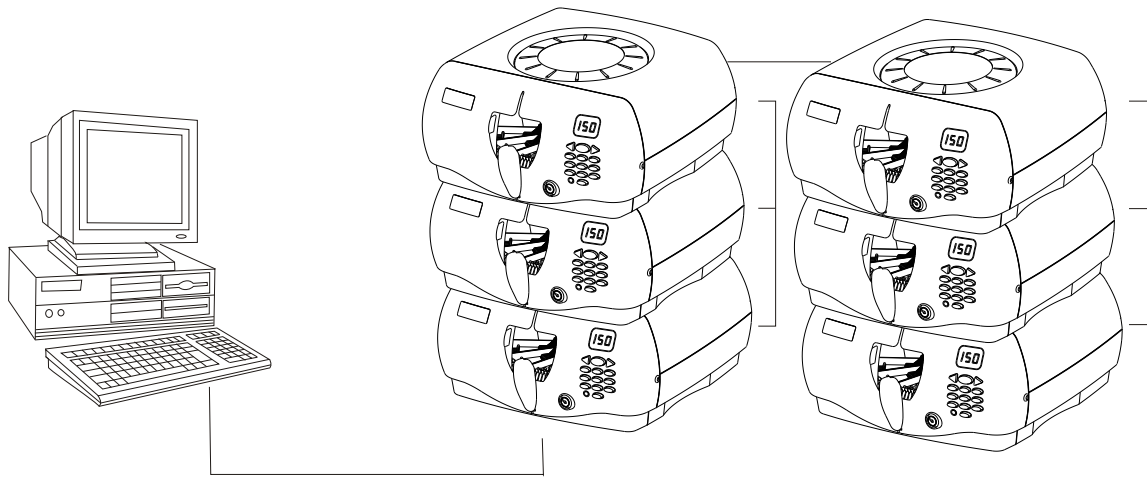
Hardware Installation

● ***Single Unit Installation***

- Plug the adaptor into the power source socket at the backside of the CD Library II and plug the other end of the adaptor to the power source outlet.
- Insert the square end of the B-type SUB serial port cable into the USB serial port at the backside of the rectangular A-Type end into the USB port of the computer.

- **Multiple Units Installation**

- To complete the installation for multiple units, connect the power cable and USB of each CD Library II the same way as the installation for a single unit.
- For multiple unit installation, the ID is determined by the sequence of the installation. Please arrange the machines in sequence before their installation.
- Please see the following diagram to connect multiple machines.



Note:

- If Windows O/S asks the drivers when you plug in USB cable, do not select HD drive or CD-ROM drive, system will find the drivers from Windows O/S driver database. The machine use default drivers in O/S.
- Machines can be stacked to save space. However, the maximum quantity is recommended not exceed 3 sets of CD Library.

Test After Installation

- Plug the adaptor into the power socket, and other end into the power outlet. If the LCD is on, the turntable will rotate and automatically position itself. This action shows the power is connected properly.
- Plug the USB cable into the socket. The machine will perform the rotation for positioning once. This action shows the USB cable is connected properly.

Stand-Alone Machine Operation

- Saving Discs- Open the slide door, and fill the name of the disc in the Management Form. Turn the knob to the number according to the one shown in the form. Press the knob and the machine will automatically bring the disc into such position. Insert the disc through the middle of the door, and press the knob to collect the disc.
- Retrieving discs- Search the disc name which you wish to have in the Management Form. Turn the knob to that number. The CD Library will automatically bring the CD to such position. The disc will be lifted automatically for you to take it out. If you need to choose another disc, just press the knob to get the retrieving rack down before turning the knob again

Display Screen

The number shown on the digital display screen will change when you turning the knob. When you need to select a specific slot number, turning the knob to the specific number and press the knob. The CD Library will spin to the specific slot and pull out the CD for you. When you another CD press the knob and turn the knob to the number you need. Press the knob again. The CD Library will spin to another slot and pop up the CD for you. To save power purpose, the display will shut down after a period.

Lock

For security purpose, turn the lock to the right for locking after closing the door, and remove the key from the lock. After locking, both of the door and the upper case can no be opened.

Trouble Shooting

- **Can not read the disk during software installation**
 - Check if the bundled software disk is scratched or damaged.
 - Check if the CD-ROM drive skips tracks
- **Can not install software**
 - Please check your computer if meets the basic computer requirements for installation for CD Library.
- **Can not find machine after open the software**
 - Check whether or not the system is power-on, the USB cable is properly connected, the operating system has USB drive program. After entering into the CD Library software, firstly select machine ID number in the Search function. If there is no number shown in the menu, then check if the USB cable is connected properly.
- **Jammed**
 - Immediately send the machine to distributors for maintenance.
- **Can not turn on power**
 - Please check the socket if the power adaptor and DC connector are plugged properly. Please also check if the power cord is short circuit, or the adaptor is damaged.

Note: If the occurrence cannot be found above, please kindly contact your local dealer immediately.

Specification

- Storage Type: Any kind of 12 cm discs (CD, CD-R, CD-RW, DVD)
- Product Size: 350mmX180mm(H)
- Total Capacity: 150 CDs
- Port Type: USB Port
- Software Language: English, Spanish, Italian, French, German, Traditional Chinese, Simplified Chinese, Japanese & Korean.
- Power: DC 9V/1 Amp
- Computer Requirement:
 - Pentium 166 MHz or higher
 - USB Port
 - Microsoft Windows 98/2000/ME/XP
 - Minimum Memory Size: 8 MB
 - Minimum Hard Drive for installation: 16 MB
 - CD-ROM Drive

FCC Regulation

This machine has followed Chapter 15 of the FCC regulation regarding the Class B digital device for testing, and it is confirmed that it meets the requirement of the regulation. The foregoing regulation provides proper protection for the user in residential areas from being interfere by harmful electromagnetic wave. The design of the equipment will not interfere electronic communications. If there is any doubt about the interference source, please shut down the machine and test if there is any interference coming from this machine.

CE Standard

This machine passes the test of the European CE product certification, and will not generate electromagnetic interference (EMI) or will not be affected by EMI.

Using the product indoor

This product is designed as an electronic product for indoor use. Any damage caused by using the product outdoors is not our responsibility and such damage will not be covered by our guarantee or warranty.

Recommendations for this machine

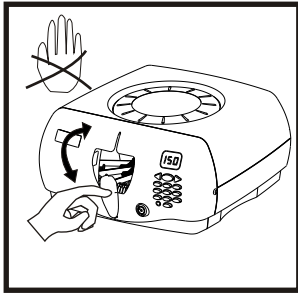
To protect your precious disk from being damaged or scratched during its removal, please follow the instruction as shown in Figure A and try to hold the disk b its edge as much as possible.

After finished using the disk, remember to put it back to the original position for an easy retrieval next time.

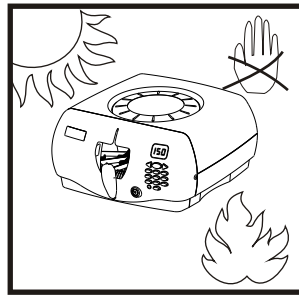
When the machine is not in use, please shut it down and close the door to prevent your discs from being contaminated by dust.

Cautious Items

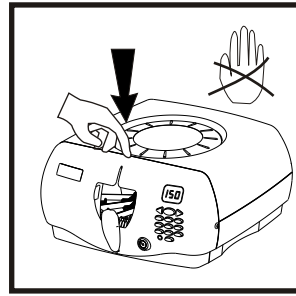
Follow the instructions below for your safety and the protection of your property.



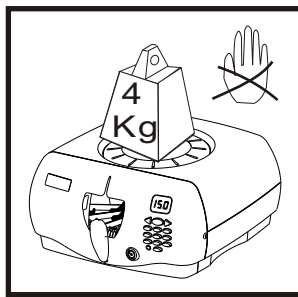
Do not move the CD Tray



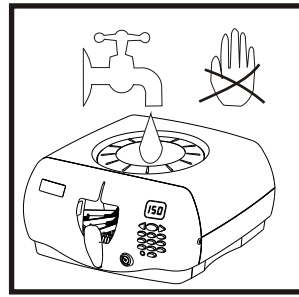
Do not close fire or locate in high temperature



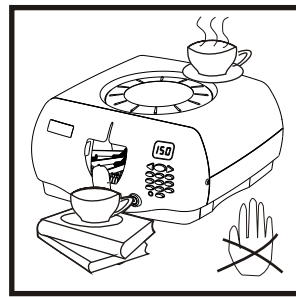
Hard push dose not allow at this specific point



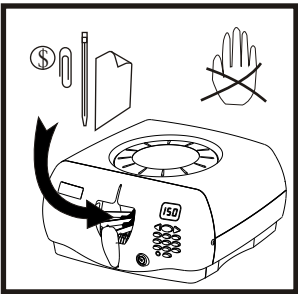
Do not press heavily on the machine.



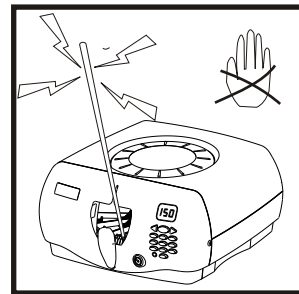
Do not pour any liquid into the machine.



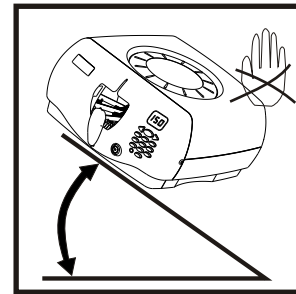
Do not place object on the machine.



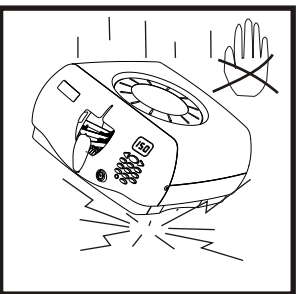
Do not put foreign substance in the machine.



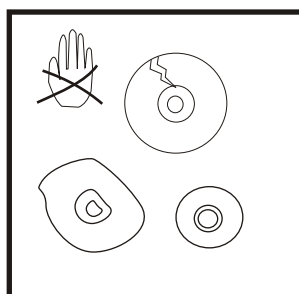
Do not put electrically conductive articles in the machine.



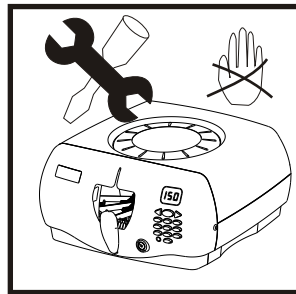
Do not tilt the machine.



Do not drop the machine.



Do not insert deformed disk into the machine.



Do not split the machine apart.

CD Library II

(DC-300)

Software Manual

(Windows & Macintosh)

Warning!!

This manual provides essential information for the protection of the user and others possible injury and property damage. Please read this manual before you use it. Always follow the instructions whenever using this product to prevent any possible injury and property damage.

Software Guide for Windows O/S

Software Installation

To fully utilize the functions of your CD Library, you should install the bundled software after the computer connection in order to effectively manage the discs for your computer. This software supports Windows 98/ME/2000/XP systems.

Note 1: CD Library software only works in 「Administrator」 mode in Windows 2000 and XP.

Note 2: Since Windows 95(version A)/NT 4.0 does not support USB interface; CD Library software can not be used in these 2 versions of O/S.

Installation Guide

1. Insert the bundled CD Library software disc into your CD-ROM drive first.
2. Autorun.exe will be executed automatically. If not, use explorer and go to CD-Rom drive. You can find this file in the folder named 「CD Library For Windows」. At the meantime, there is a file called 「Setup.exe」 in the folder. Click it to start installation.
3. Complete the installation according to the instruction shown in the monitor.
4. After the installation, remove the CD Library software disc. It is recommended to put the disc in CD Library machine for future use.

Software Operation

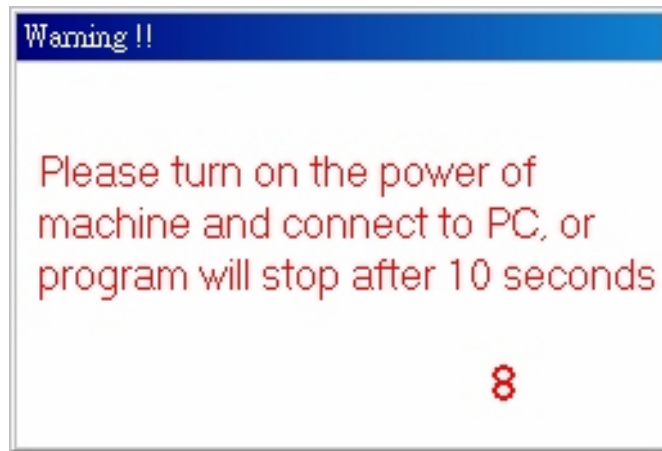
Starting Software

After software installation has completed, it will automatically generate an icon on the desktop. You may directly click such icon to run CD Library software.



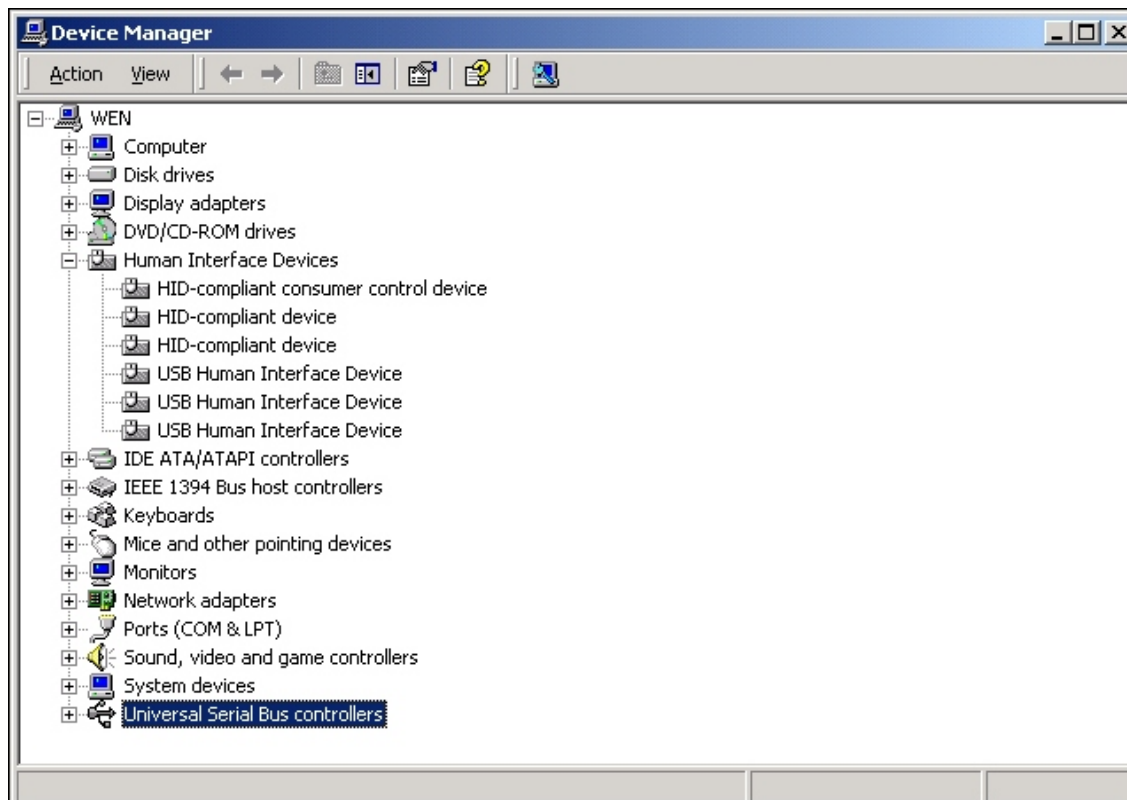
CD Library software icon

Warning Sign



This warning sign will appear due to these reasons:

1. CD Library machine has no power (Solution: Plug in AC adapter)
2. CD Library machine USB cable does not connect to the computer. (Solution: Plug in USB cable in the computer)
3. Your computer does not recognize this device.
 - 1) Make sure the USB slot on your motherboard is working properly. If you are not sure about this, please ask someone who is familiar with computer hardware.
 - 2) Check 「Device Manager」 if the 「USB Human Interface Device」 has appeared or not.

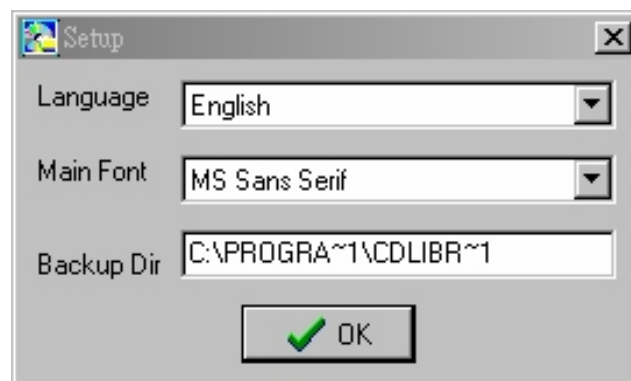
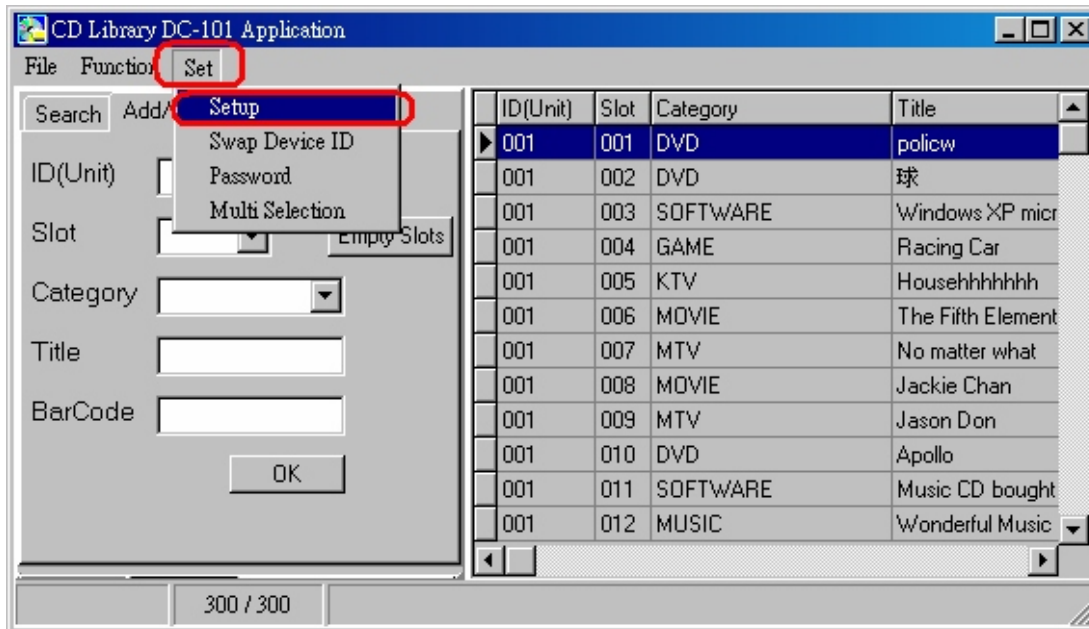


3) Double click on 「USB Human Interface Device」, you will see drivers here



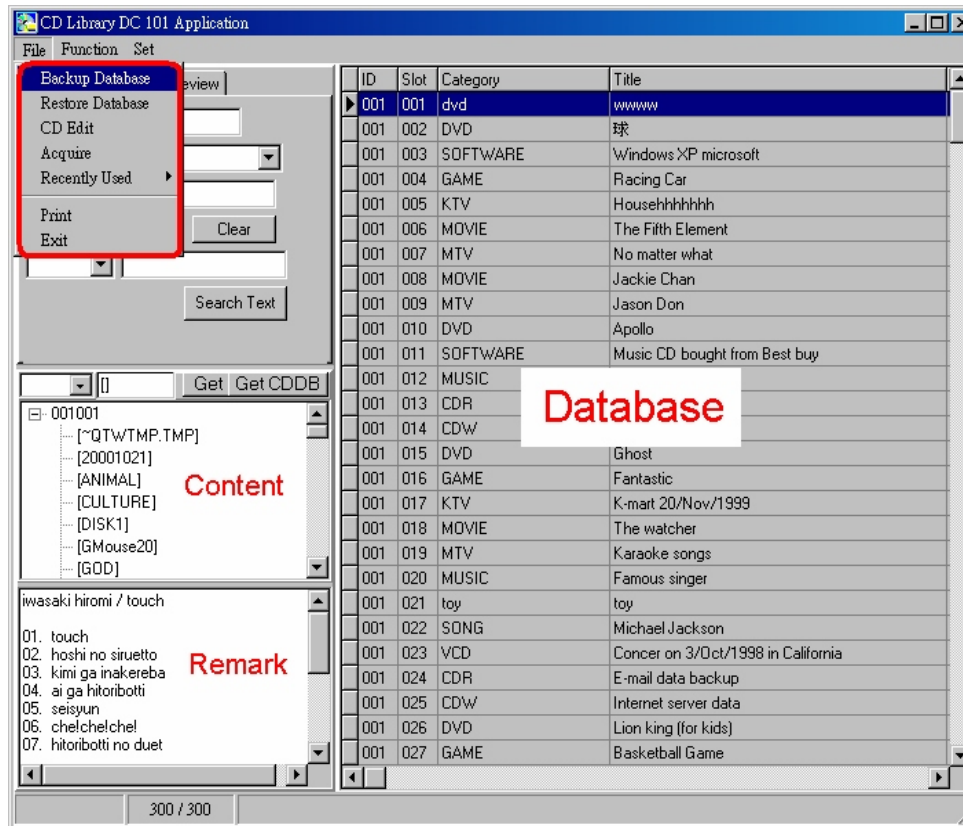
Software Setup

Adjust the language to English, and then select font. You also can select the database backup directory.



Command

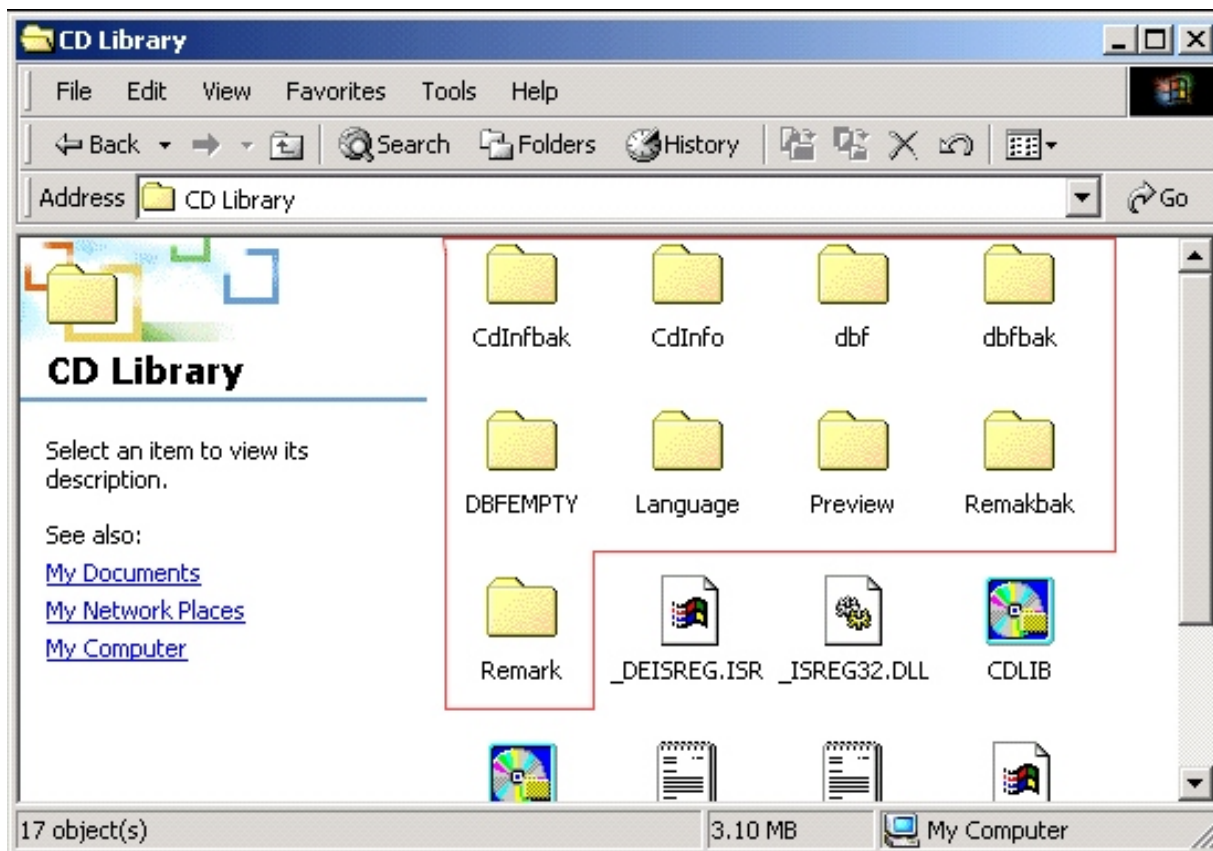
1. File



Backup Database

After you have keyed in a large amount of data, you may select this function, the program will backup all the data in the directory by generating BAK files. You can find them in C:\Program Files\CD Library (See picture below). All the folders in the 「CD Library」 folder are database. When the original database is damaged, the program will use the BAK folders to replace them (non BAK folders) automatically. It is for emergency situation only. Please see following detail description:

Important!! You need copy these 「all」 database folders to another directory, once you want to re-install the software or you want to use the same database in other computer, just install CD Library software and then copy these folders to the same directory. You can use the old database without typing again.

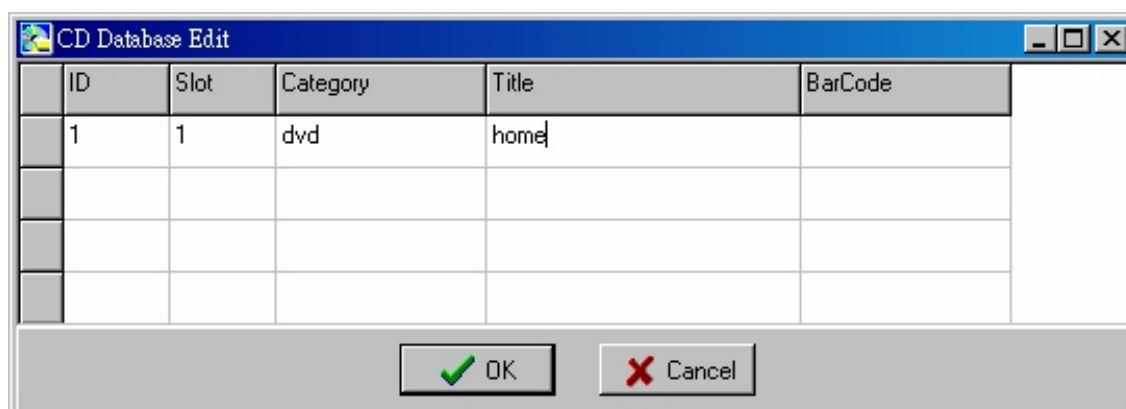


Restore Database



If you want to use previous backup database, you can click 「Restore Database」 manually. The database will back to the database before you backup.

CD Edit



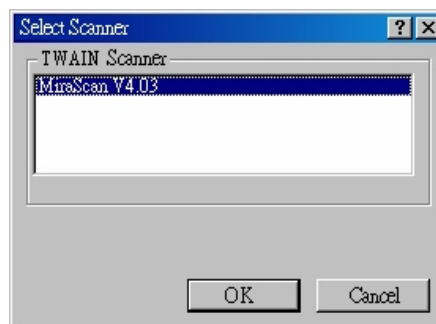
Maybe you want to edit a lot of CDs at one time; it is not so convenient if you use 「Add/Edit」 and type in information one by one. You can use

「CD Edit」 function to edit numbers of CDs at one time.

Note!! When you click 「OK」, it will appear 「Data not complete」, which is normal, do not worry.



Acquire



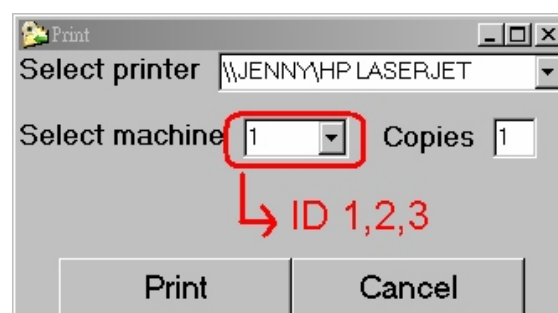
This function brings you scanner program, when you want to add more pictures on 「Preview」 tab, you can use this function.

Recently Used

This function allows you to choose last 10 used CDs, the top item is the last CD, and the bottom item is the last 10 CD.

Print

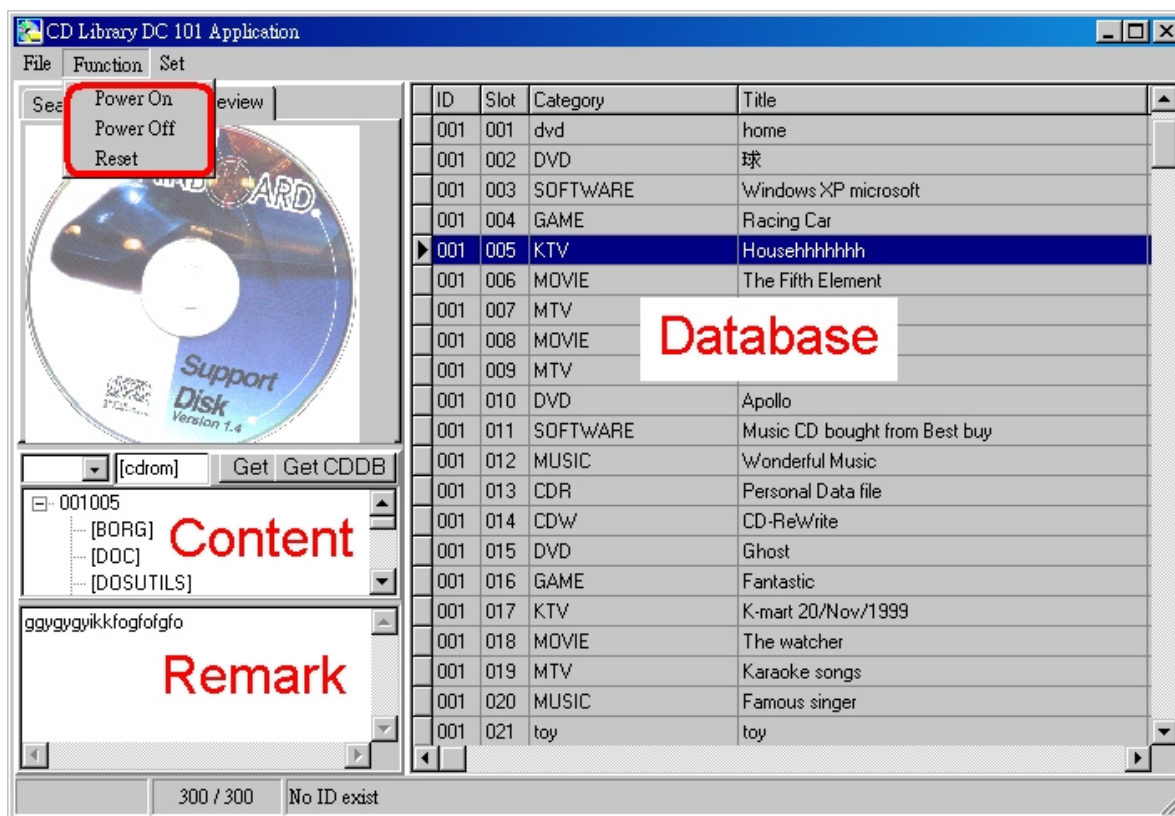
To print CD titles in the database by machine ID on A4 paper.



Exit

Click Exit to close the software.

2. Function



Power On

When the power is OFF, use the function to let LCD digital display on and the CD Library machine will be ready to use.

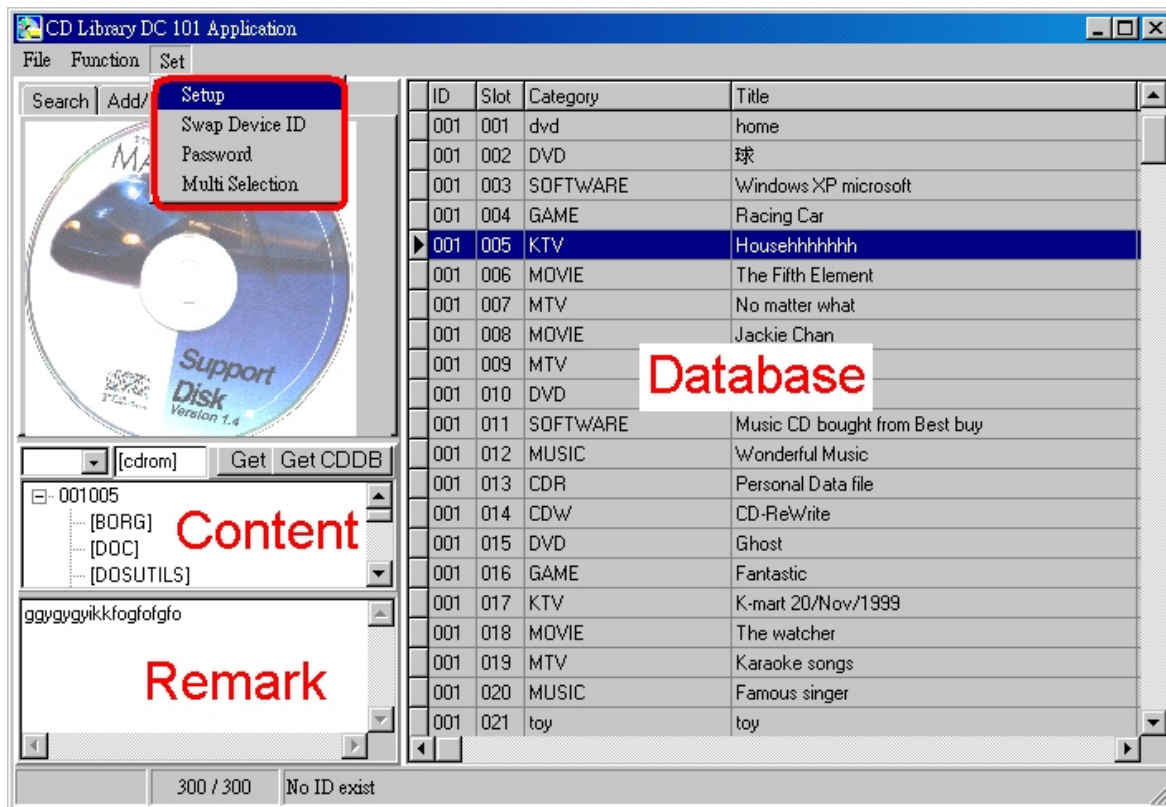
Power Off

When the power is ON, use this function to let LCD digital display off, the machine will lower the retrieving rack and shut down.

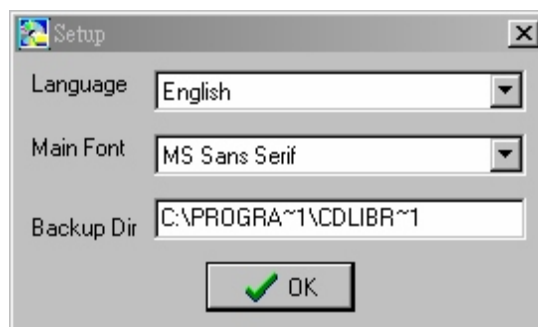
Reset

Shut down the machine and then reset it. If there is any abnormal situation, select this function to resume to original atus.

3. Set

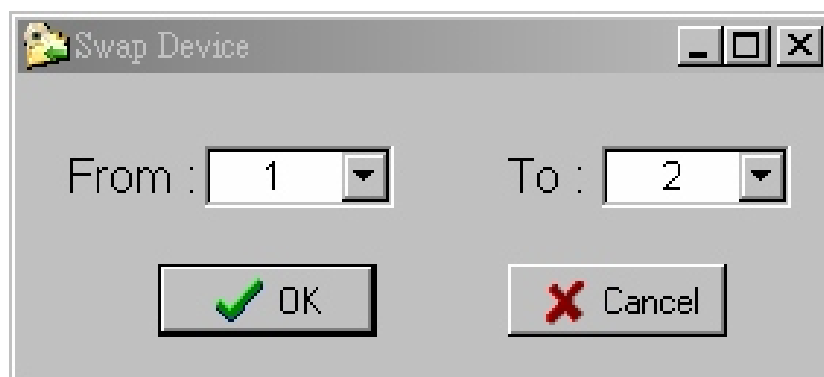


Setup



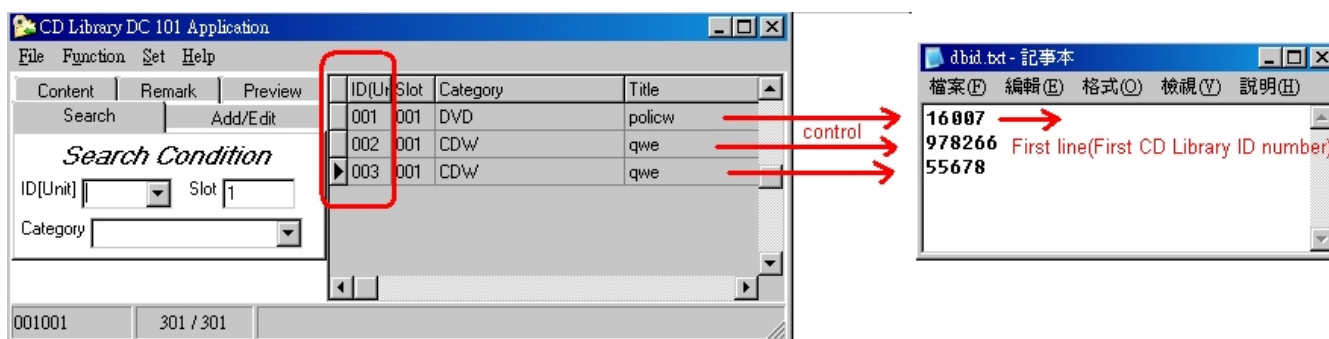
1. Language: You can select language to change the interface language. (Traditional Chinese, Simplified Chinese, English, French, German, Italian, Spanish, Korean, and Japanese)
2. Font: Change the font to fit your monitor display.
3. Backup Directory: Change the backup files directory.

Swap Device ID

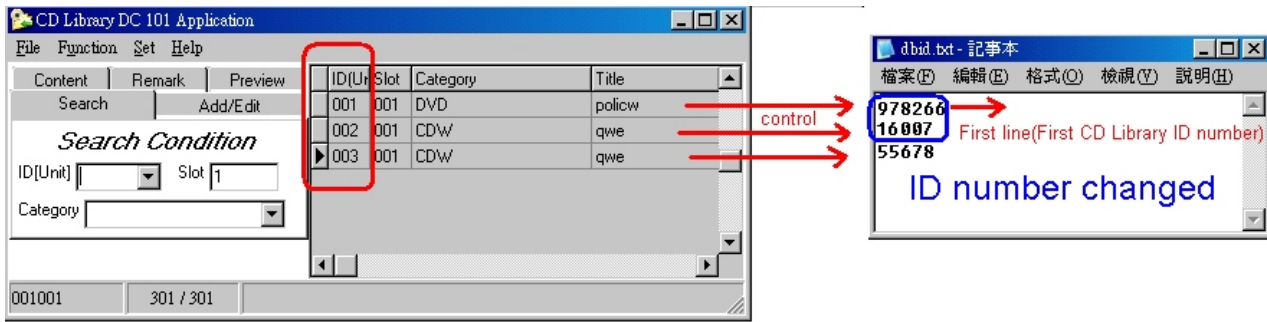


Each CD Library has a unique ID number in the chip (or machine), software will grab the ID number and save it in the file called 「 dbid.txt 」, the location is C:\Program Files\CD Library\dbid.txt

EX. You have 3 CD Library machines, each ID number is saved in dbid.txt and your database ID1 controls 16007(first CD Library), database ID2 controls 978266(second CD Library), database ID3 controls 55678(third CD Library)



You can change the position manually to let database ID1 control 16007 (first CD Library) or 978266 (second CD Library). Using Swap Device ID is another way to change position.

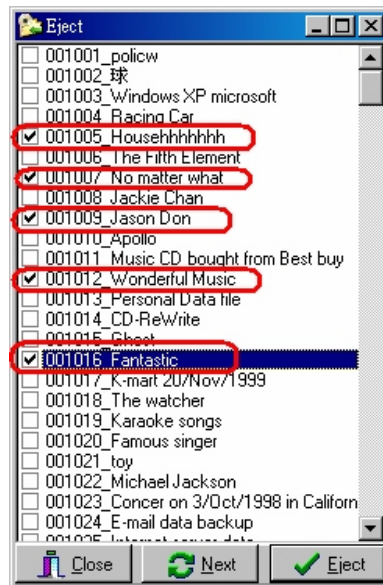


Password



Set up a password to prevent strangers from looking at your database.

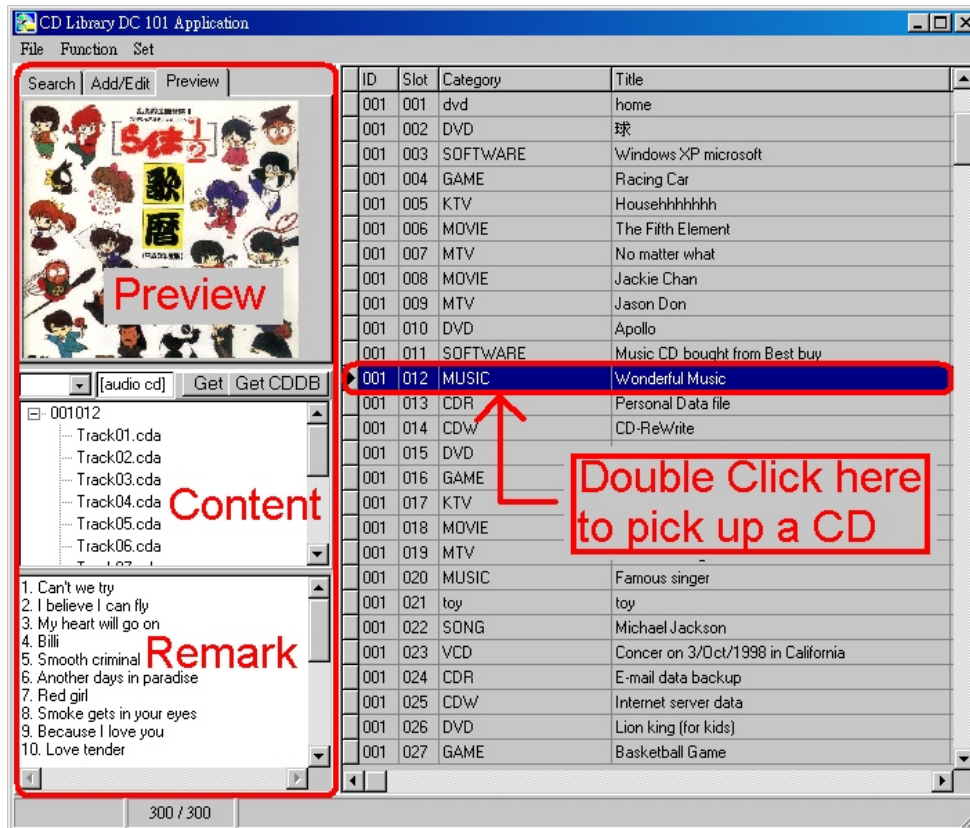
Multi selection



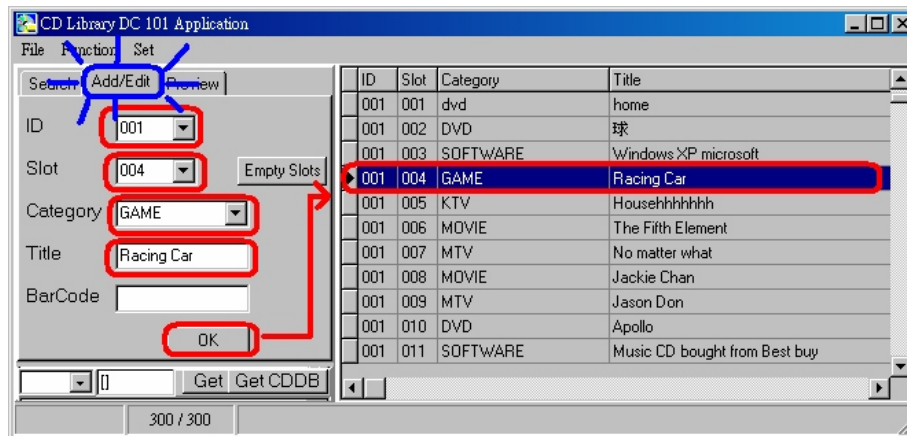
If you want to pick up many CDs at one time, you can use this function. Select the CDs you want, and click 「Eject」, CD Library will go to slot 5, pop up the CD, wait for 3~5 seconds, then go to slot 7, pop up the CD, wait for 3~5 seconds.

Using 「Next」 to force CD Library go to next slot quickly.

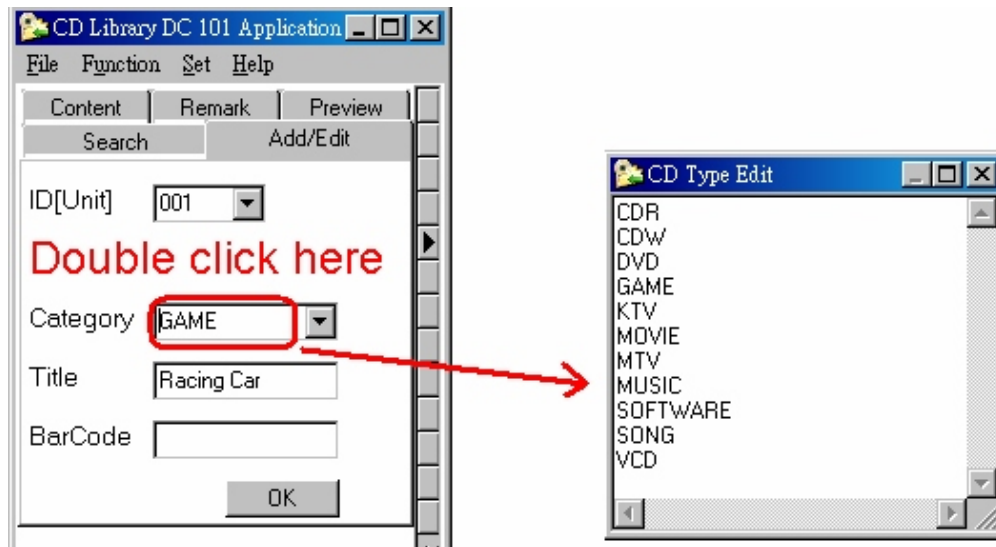
Panel



1. Add/Edit

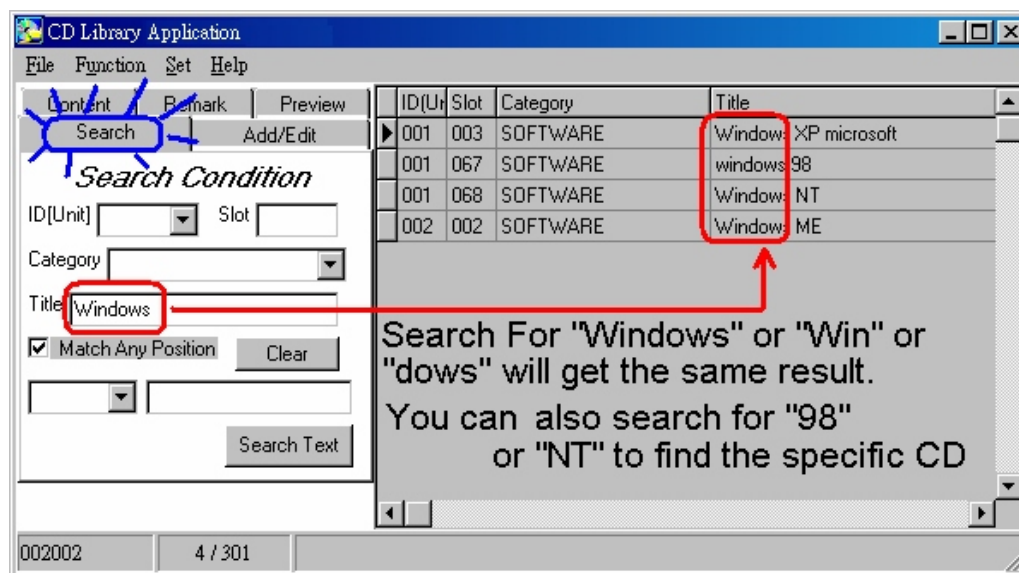


Start the Add/Edit for the database form on the screen, and enter into the form. After filling and confirming the information as needed in each column, a new record of data is added or edited. You must input the machine number and the slot position. You may pull down the Category menu. The slot number runs from 1 to 150 only, and error message for ejection will show if you input a number out of this range.

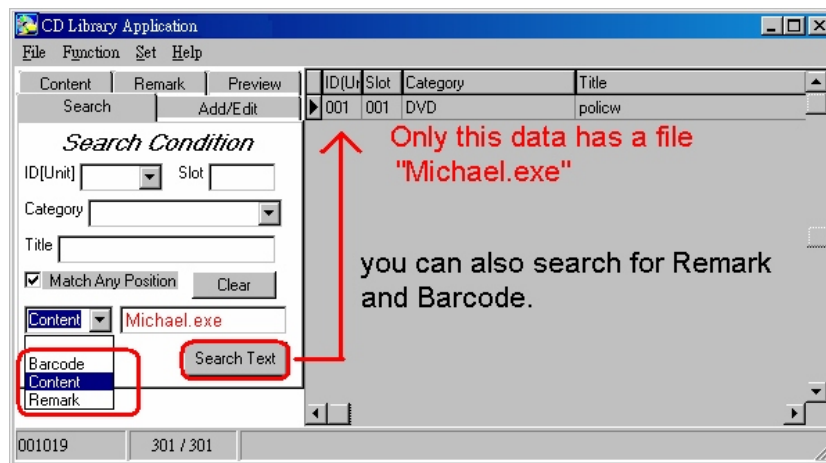
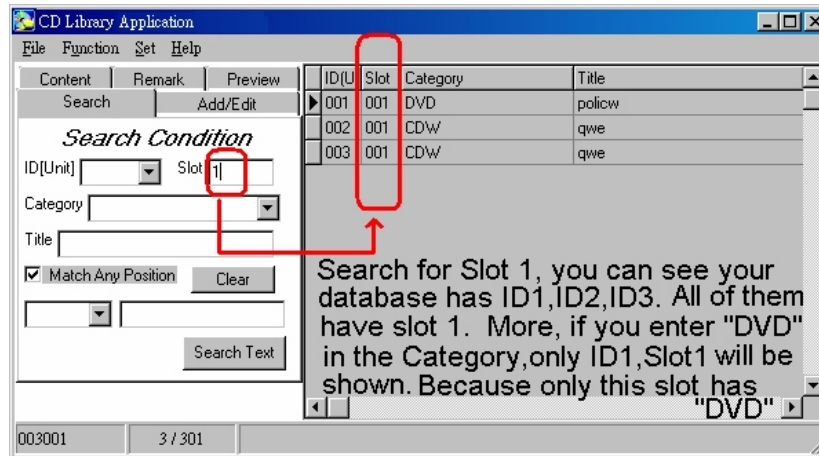


Double click Category, you can edit the CD category.

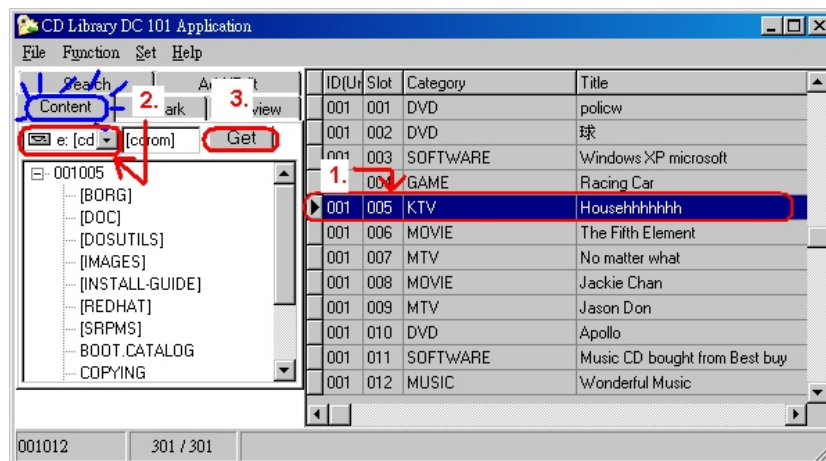
2. Search



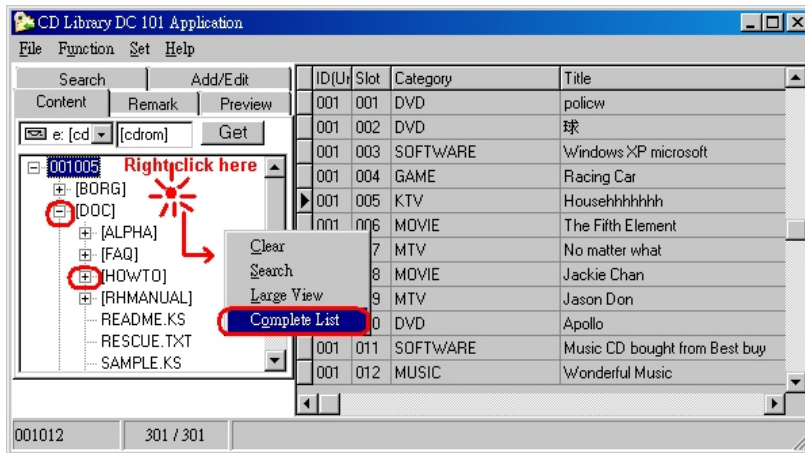
1. To quickly search the page, fill in the condition in the column, the database will find the data that fits the conditions. You may key in a single condition or multiple of conditions for search. Click 「Clear」 to return to the display of the database of all information in the disc and provide a listing.
2. If 「Match Any Position」 is checked, the text with any part of the string will show. If it is not checked, the text having the first same alphabet will show.



3. Content

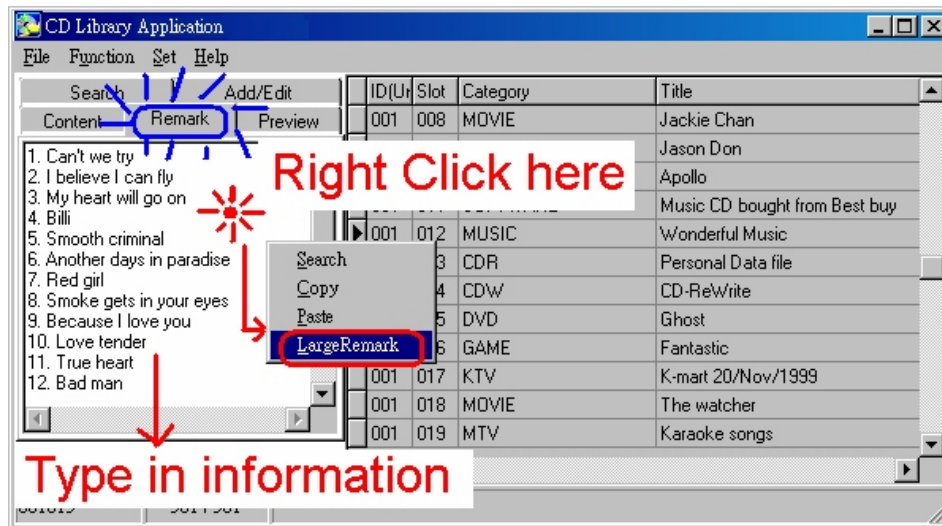


- Step 1. Select the slot from database by click. The content information will be added into this slot.
- Step 2. Select CD-Rom drive
- Step 3. Press 「Get」, software will read all the data from the CD.



Right Click to select other function.

4. Remark



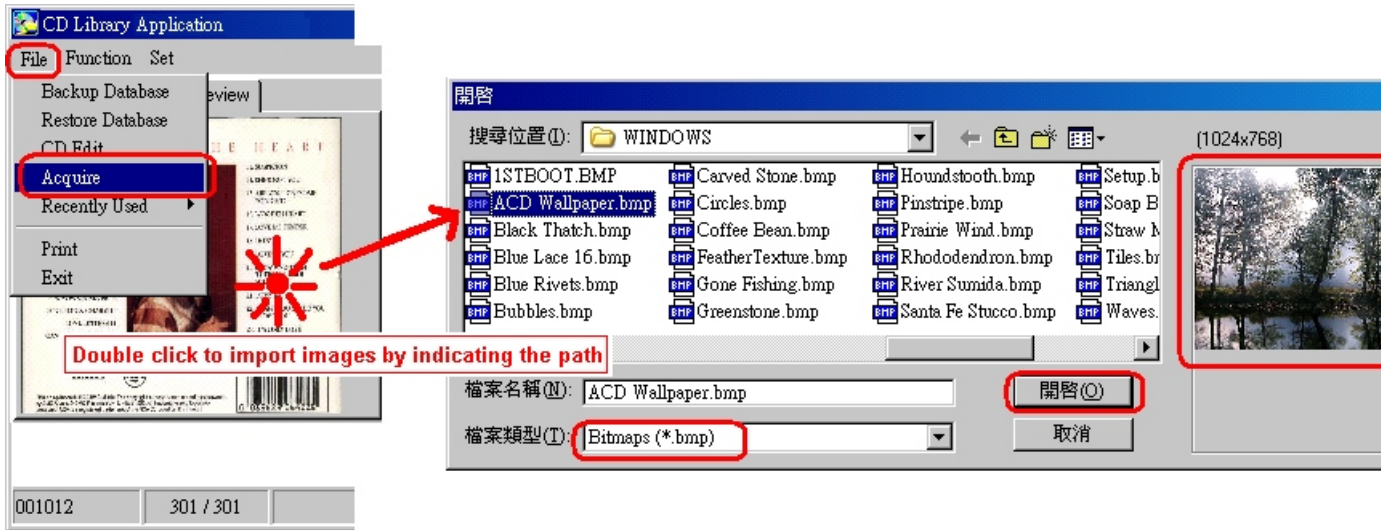
If the title is not able to fully describe what it contains, we may select this page to remark the contents of the disc, and more particularly for musical CD, since the names of the songs can be input for easy search, or make a record on the person who has borrowed that CD.

5. Preview

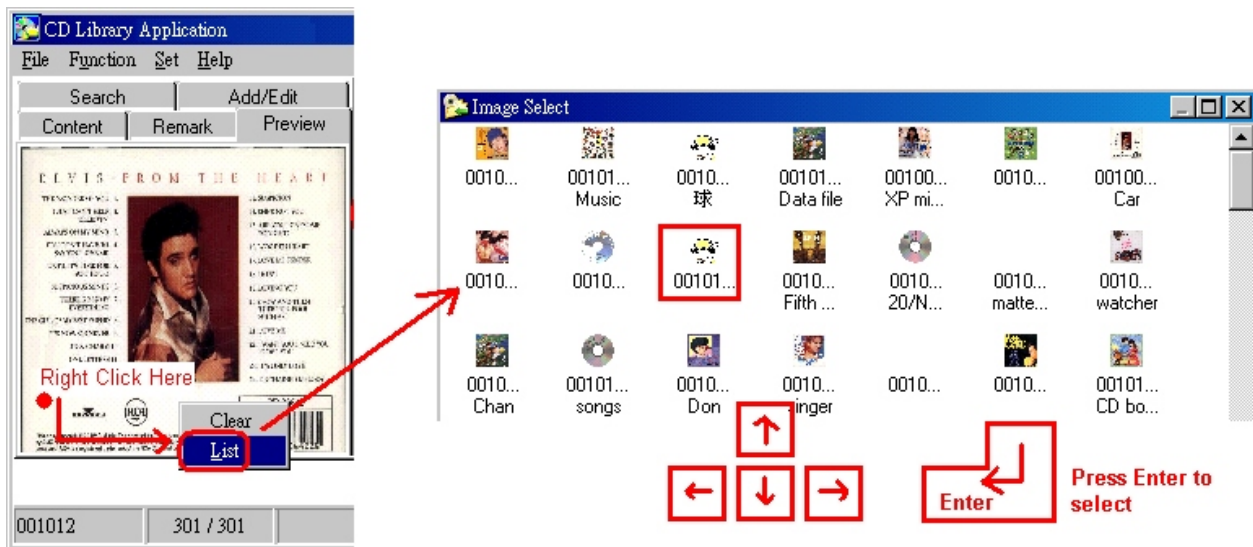
Step 1. Select the slot you want to input picture

Step 2. Press 「File」, then click 「Acquire」, it brings you scanner program, of course you need to have scanner to input pictures.

Step 3. Right Click you can have other functions.



Double click on Preview to import x.bmp file into the software





Description:

Select this function to enter into the function of browsing picture. You may press 「Get Image」 to start scanner program. Insert the printed side of the CD or the cover surface for scanning and saving it in the database. Whenever you search or see any image you want, click such image and you can retrieve the disc. You may also double click the miniature picture to open the dialogue window for you to directly place .BMP picture into the database. Press the right button of the mouse when your cursor is at the miniature picture, select 「List」 to list all picture files in the database in the form of small pictures. See what you want, and press the picture once to get that disc. You may use 「Up」, 「Down」, 「Left」, 「Right」, 「Enter」 on the keyboard to select miniature picture.

Software Guide for Macintosh O/S

Installation of 「CD Library for Mac」

We are going to describe how we install the included software 「CD Library for MAC」 in this section.

- ***Software Installation***

Put the included software CD into CD-ROM drive.

You will see a folder named 「CD Library for Mac」. There is 1 file and 2 folders inside this folder. [CDLibBundle.pkg] [Japanese] [English]

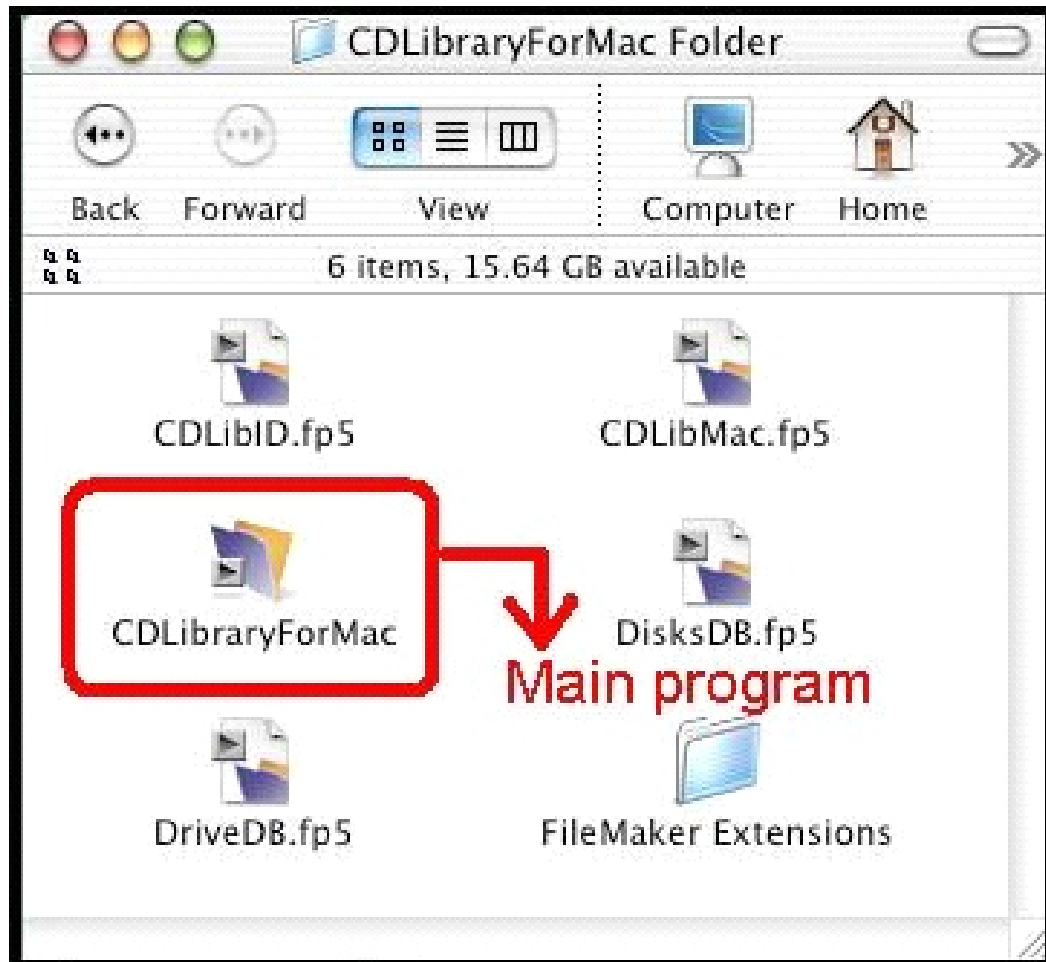


First of all, double click on [CDLibBundle.pkg]. An installation starts up. After you read the license agreement, click 「Agree」 if you agree this agreement. Follow the instruction on the screen and now we are installing CD Library for MAC.

Open the [English] folder, drag the [CDLibraryForMac] folder to your favorite place (Desktop or Macintosh HD.), the folder will be copied to the position. After this, take out the CD from the CD-ROM drive.

You will see the following files in the [CDLibraryForMac] folder:

- . [CDLibraryForMac] It is a main application.
- . [CDLibMac.fp5] Main database file.
- . [DisksDB.fp5] Database disk file
- . [CDLibID.fp5] Database for CD Library machine ID file.
- . [DriveDB.fp5] Database for CD-ROM drive file.
- [FileMaker extensions] Plug-and-Play file

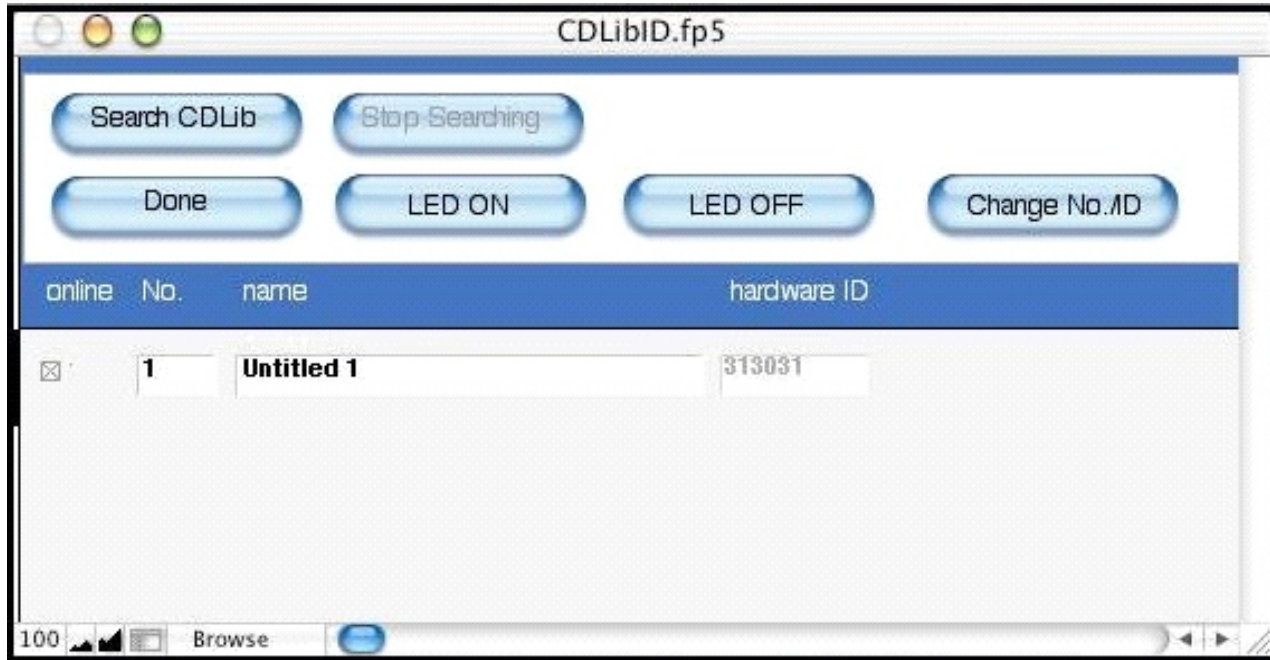


OPERATION SKILLS

● **Starting Software**

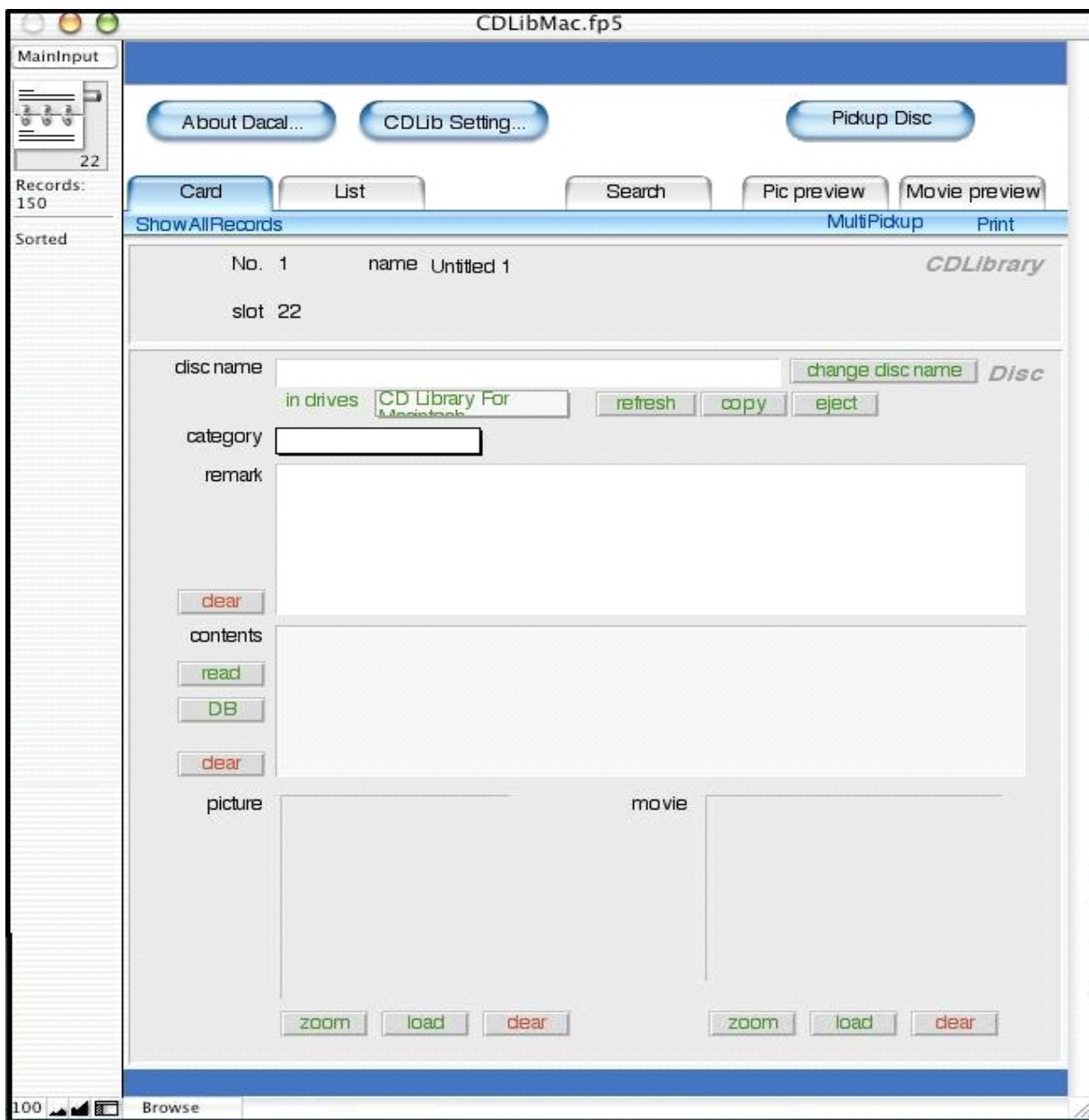
First of all, make sure the CD Library machine is connecting to Mac computer with USB cable and the power is on. (If you don't do this, an error message will appear and close the application while you are opening software.) Then open the [CDLibraryForMac] folder and double click [CDLibraryForMac] file.

A [CDLibID.fp5] window will show up if it is your first time to start the software. You are setting the name of the CD Library machines. Default is Untitled 1. Change the name of the machines here or you might want to do it later. If you are connecting multiple machines, you will see the numbers of the machines.



Click 「Done」 once you are ready.

Now the [Card] tab will appear at this moment, see the following figure.



You can input CD/DVD (disc) information here

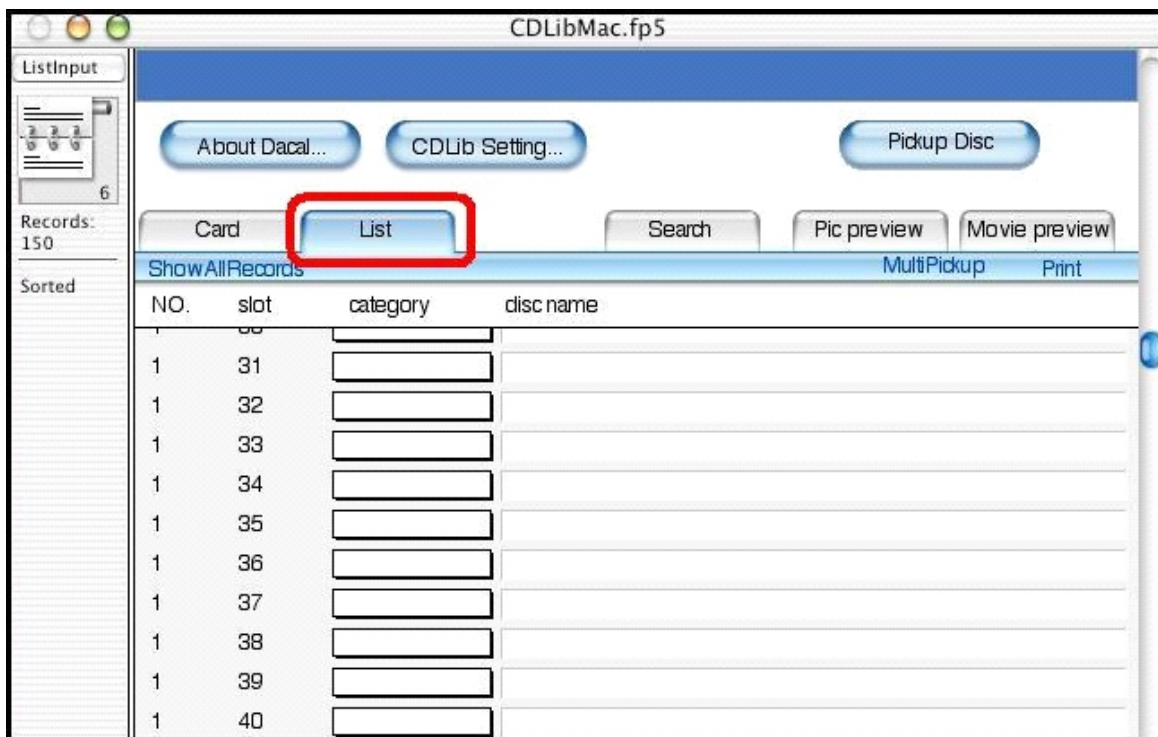
- **Input discs information**

We are going to describe how you input disc information in the CD Library software.

- **Input disc information in (List) tab.**

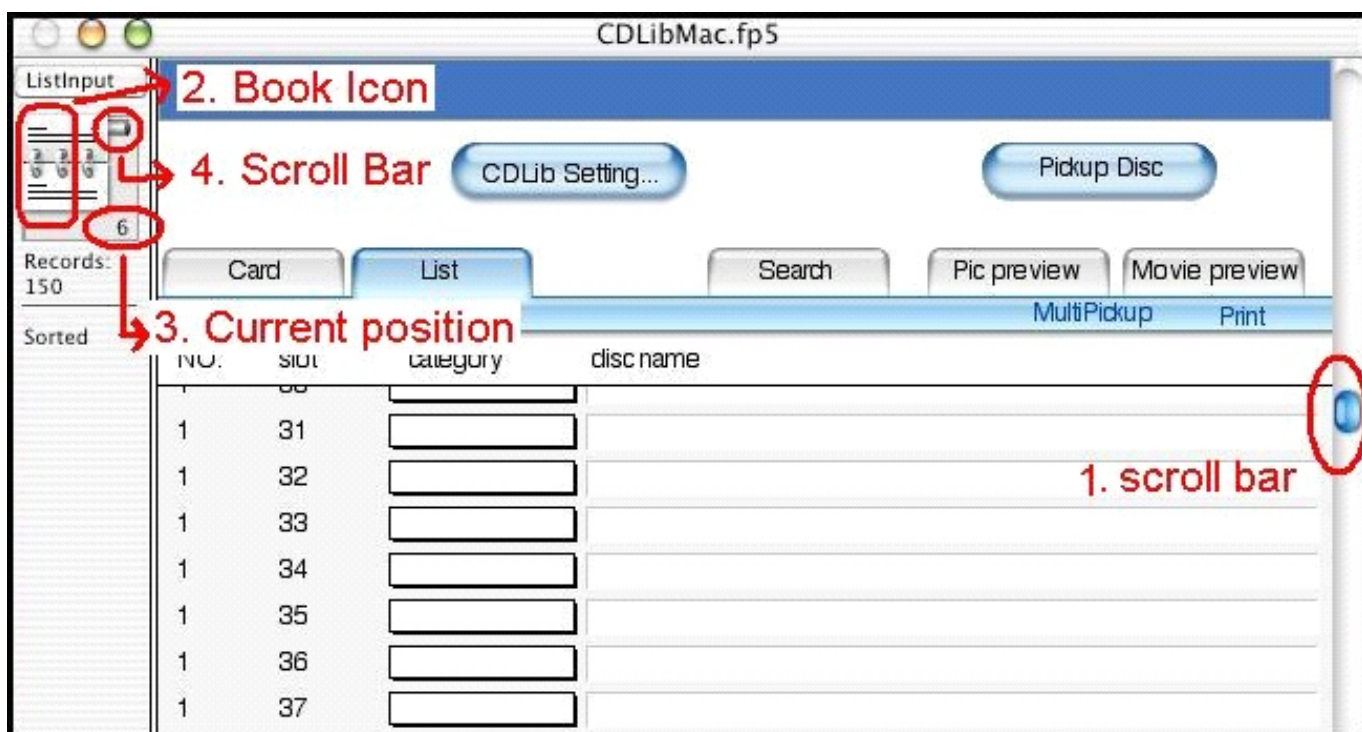
If you just want to input disc names and categories, you can do it here.

Click 「List」 tab in the [CDLibMac.fp5] main application, a [List] input/display screen shows up.



Select slot number, which you want to input the disc, on the screen.

There are several ways:

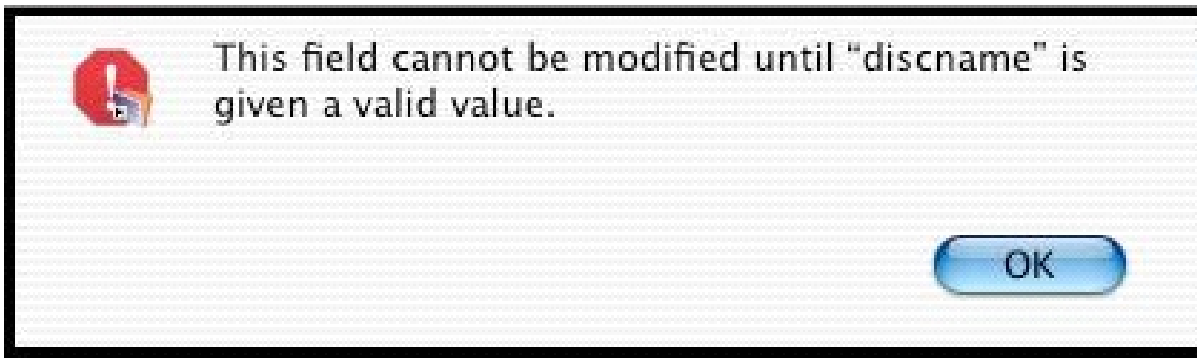


- (1) Use the scroll bar at the right side of the main application to the number you wish to have.
- (2) Click (Book icon) on the left side of the main application (ListInput).
- (3) Click the current position number below the (Book icon), and input the number you wish to have, then hit

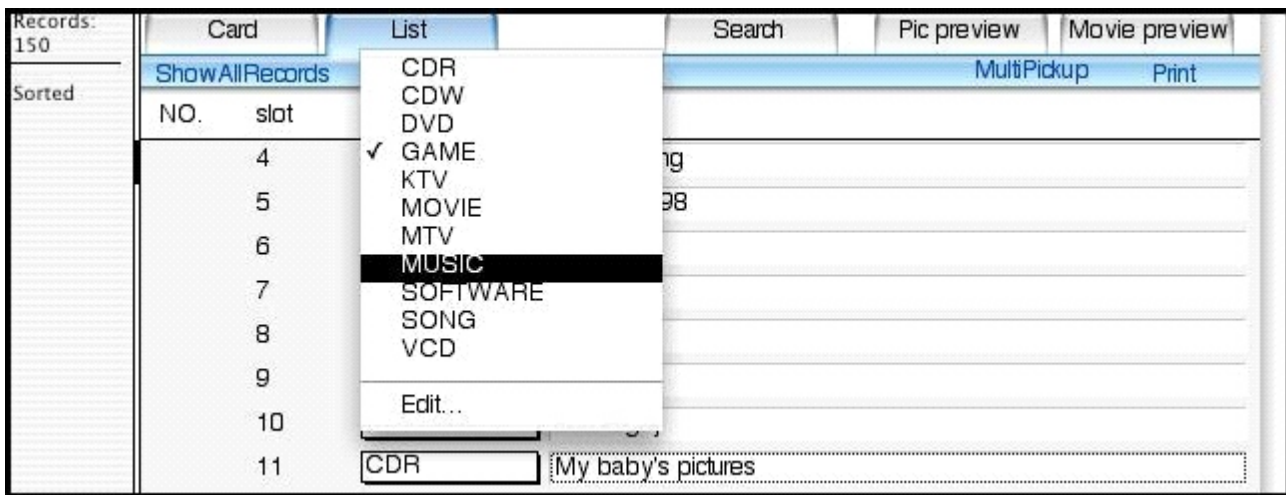
- 「Return/Enter」 on the keyboard.
- (4) Drag the scroll bar beside the (Book icon), move it to up or down.

After you have decided the number, you might want to input/change the disc name. Click the blank, and cursor shows up, then you input information here.

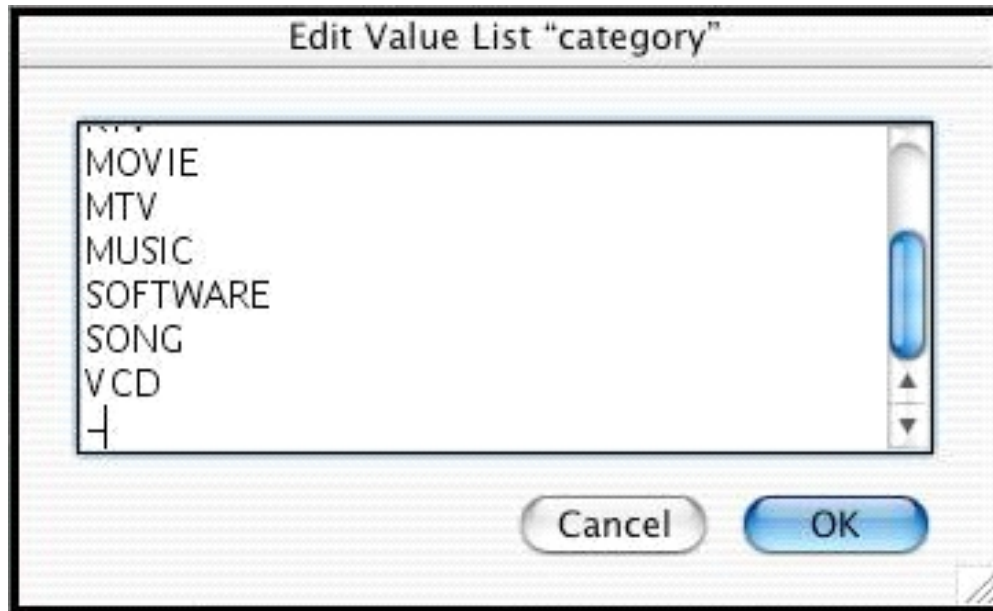
[**Note !!**] You cannot select category if you do not input disc name first. An error message shows up. See the following figure.



Select disc categories. Click category blank, you will have a Pull-Down Menu. You can choose one of the categories.



If you want to edit the category, select the 「Edit」 at the bottom of the Pull-Down Menu. You can add/edit categories here.



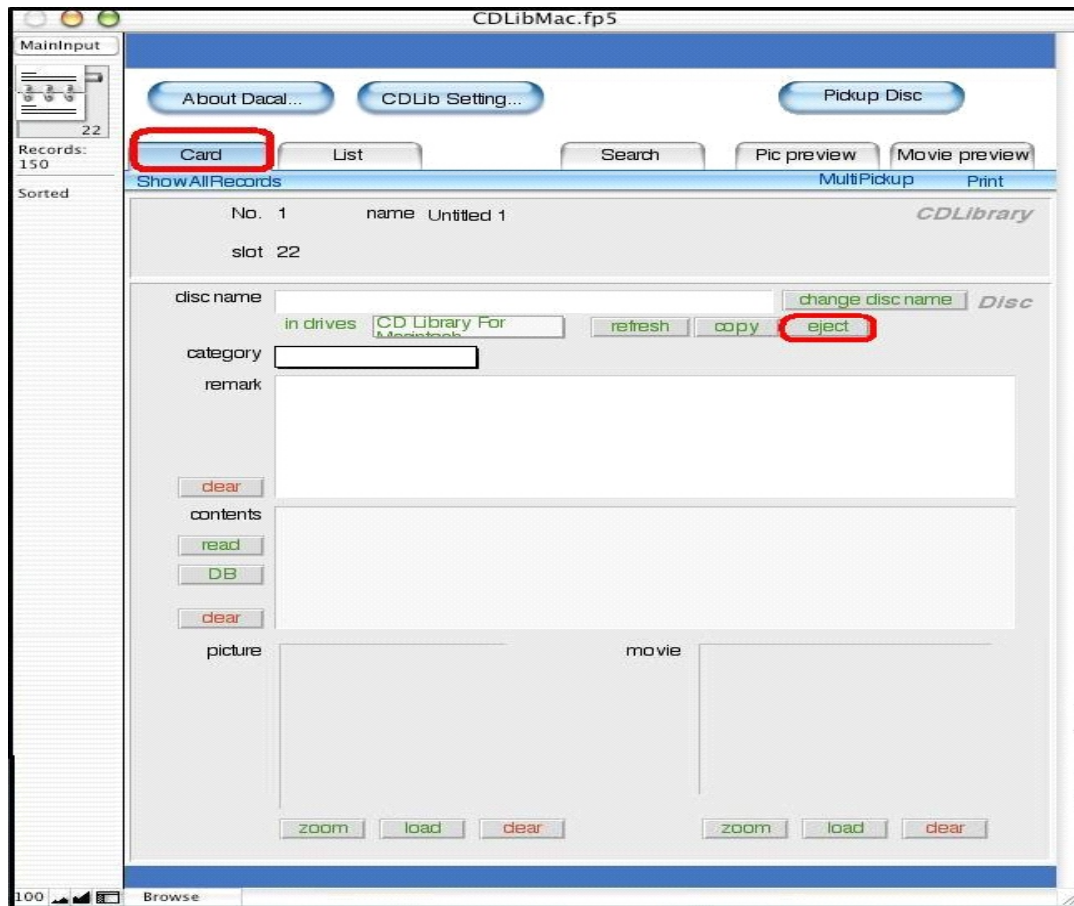
New categories will appear on the Pull-Down Menu. Click category blank you will see that.

[Note !!] If you have lots of discs to input, you use [List]. You also can add/edit detail information in form format later.

[Note !!] The information will be recorded in such position.

■ **Input disk information in (Card) tab**

Click 「Card」 tab in the [CDLibMac.fp5] main application, a [Card] input/display screen shows up.



Put the disc into the CD-ROM drive by clicking 「Eject」 below the disc name. CD-ROM drive ejects.

Select slot number, which you want to input the disc, on the screen. There are several ways:

- (1) Use the scroll bar at the right side of the main application to the number you wish to have.
- (2) Click (Book icon) on the left side of the main application (ListInput).
- (3) Click the current position number below the (Book icon), and input the number you wish to have, then hit 「Return/Enter」 on the keyboard.
- (4) Drag the scroll bar beside the (Book icon), move it to up or down.

After you have decided the number, you might want to input/change the disc name. Click the blank, and cursor shows up, then you input information here. Click 「Refresh」 and then click blank of 「in drives」, the name of the disc will be shown on the Pop-Up Menu.

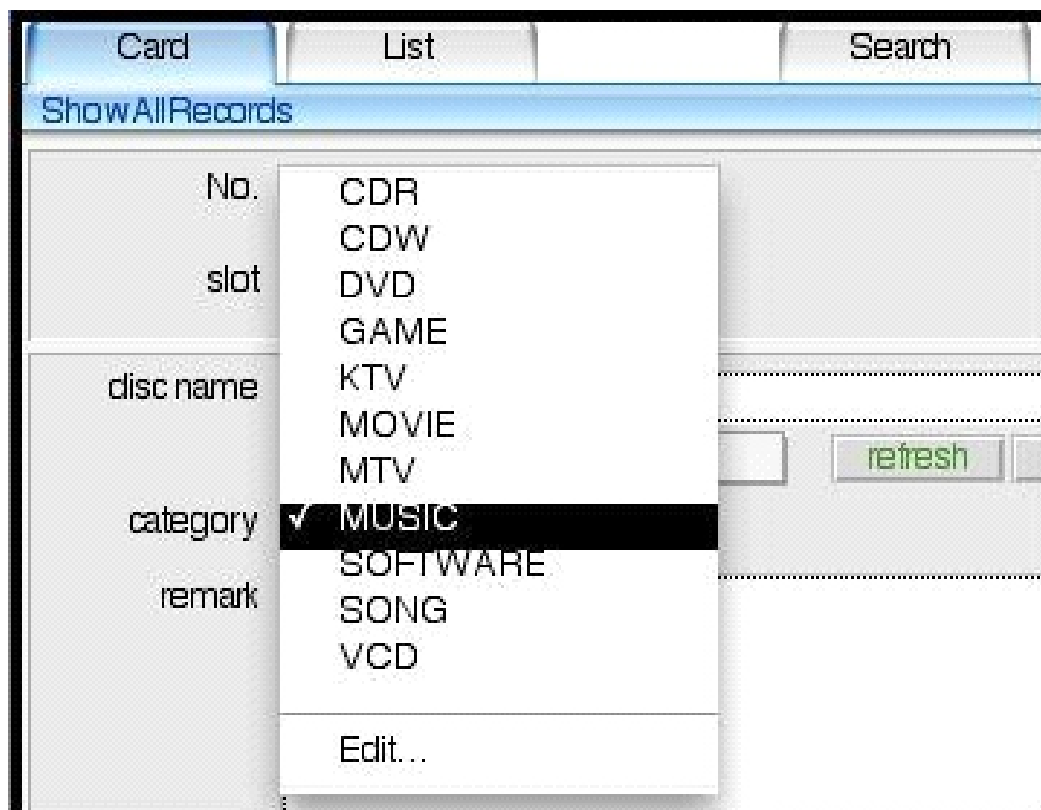
[**Note !!**] 「 Refresh 」 button can only be clicked after you put a disc in the CD-ROM drive.

[**Note !!**] Put a music CD in the CD-ROM drive, click 「 Refresh 」 , and then click blank of 「 in drives 」 , Pop-Up Menu will show 「 Audio CD 」 .

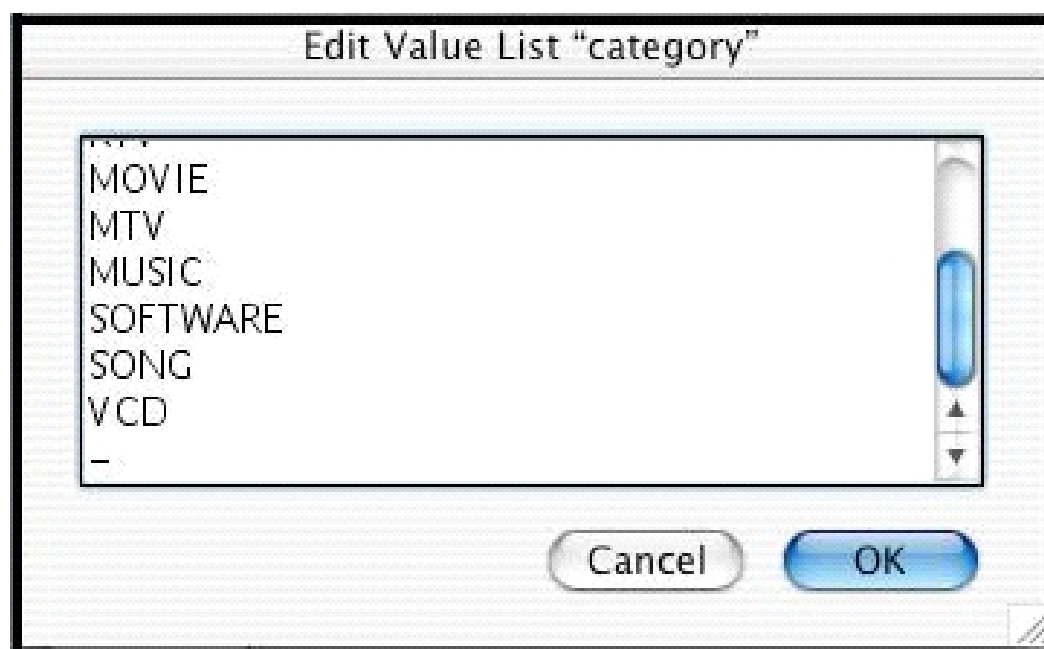


If the name of the disc shown in the blank of 「 in drive 」 is what you want, just click 「 copy 」 button, the name will be written in disc name.

Select disc categories. Click category blank, you will have a Pull-Down Menu. You can choose one of the categories.



If you want to edit the category, select the 「 Edit 」 at the bottom of the Pull-Down Menu. You can add/edit categories here.

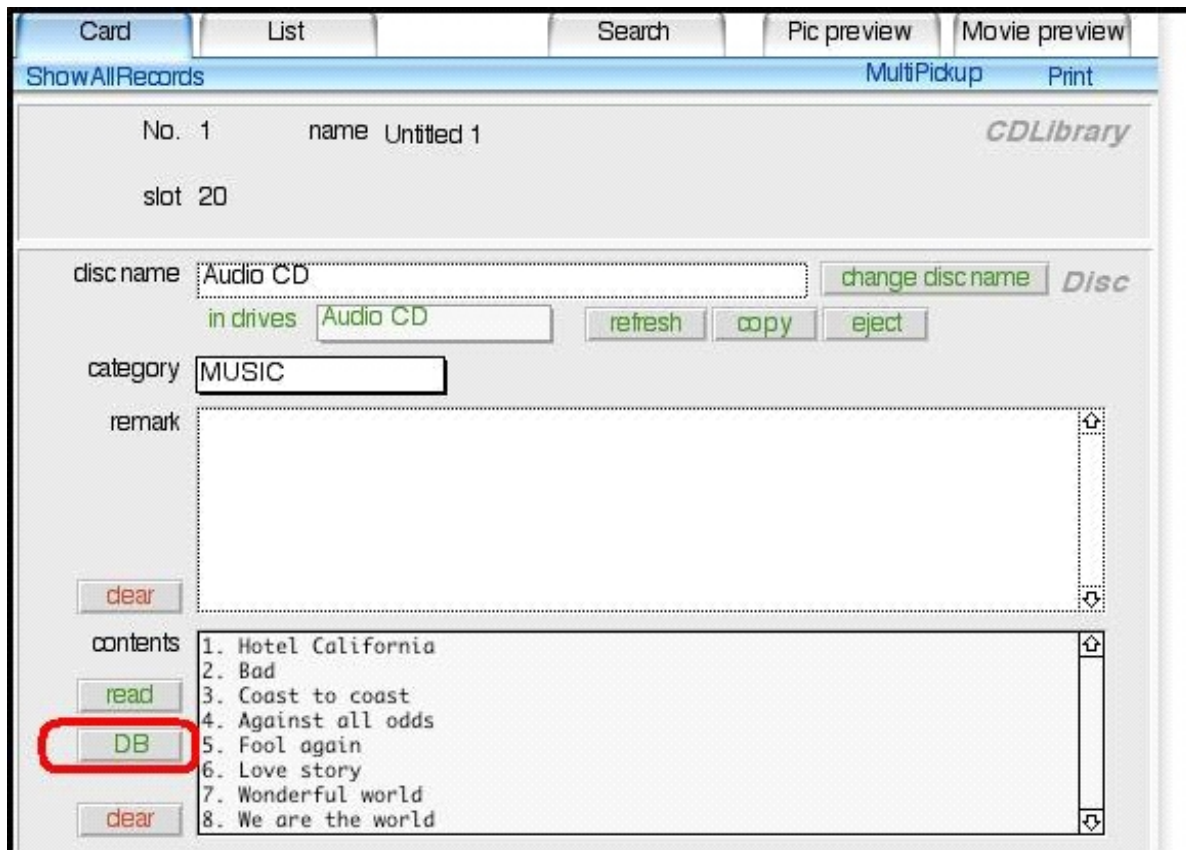


You can input very detailed information of the disc into 「 remark 」 . If you want to clear the remark, just click 「 clear. 」

You can input content of the disc into 「 content 」 , the folders and

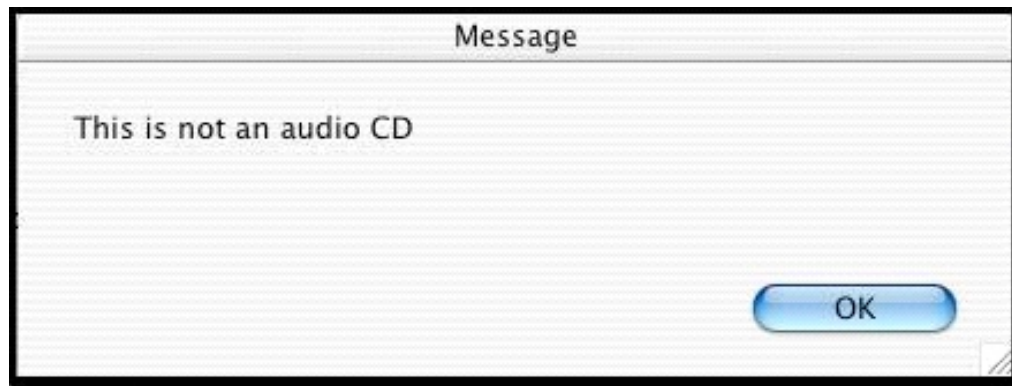
this area automatically. Before you do that, you need to put the disc into CD-ROM drive, and then click 「read」.

If your disc is a music CD, click **DB** button, CD information such as name of singers and songs will be grabbed from Internet, and then copied into 「contents」.



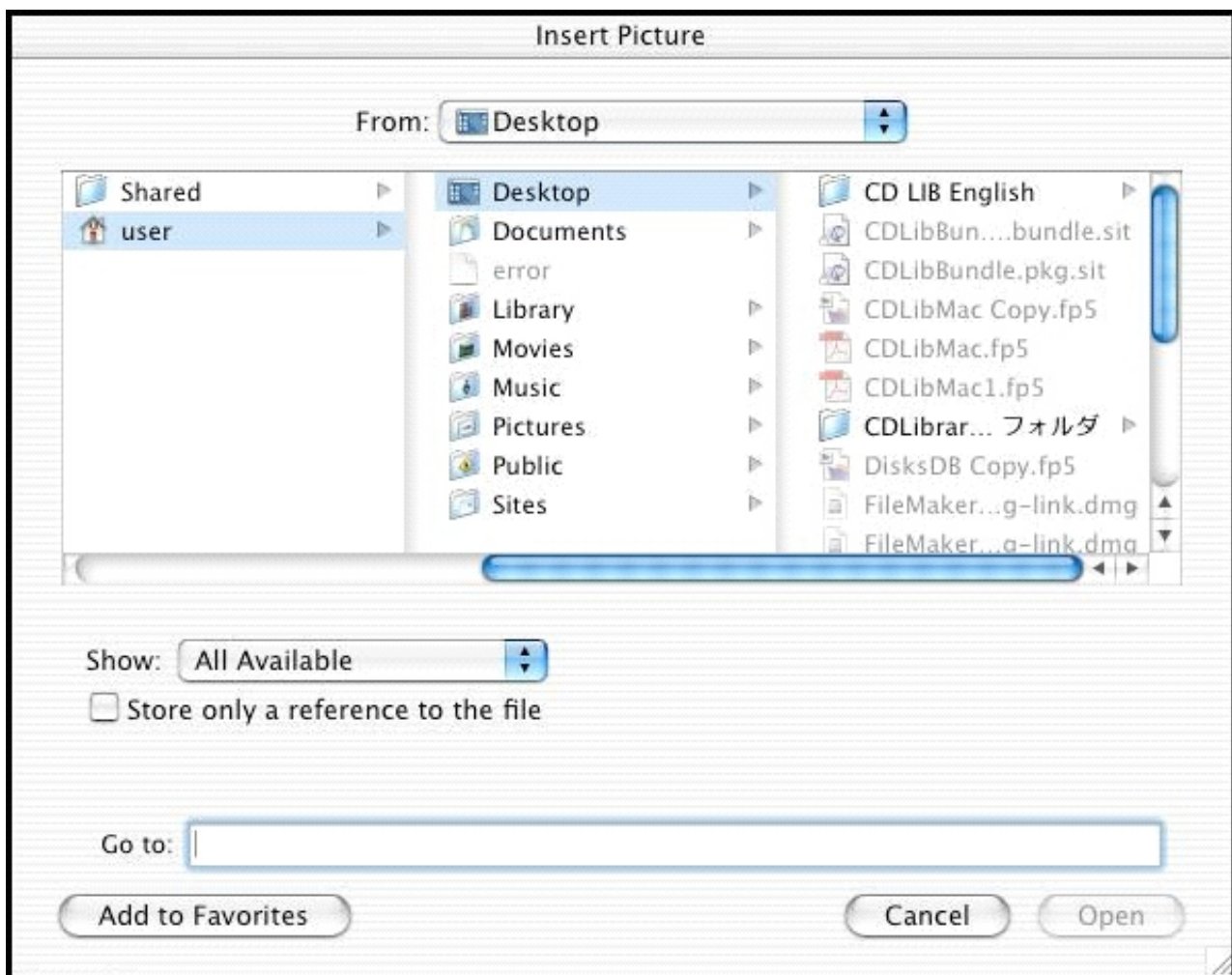
[**Note !!**]When you click 「DB」 button, Internet is required. Sometimes it shows error message 「Time out」 because of Internet busy. You can click 「DB」 button several times.

[**Note !!**] If your CD-ROM is NOT a music CD, and click 「DB」 button, an error message shows up. See following figure:

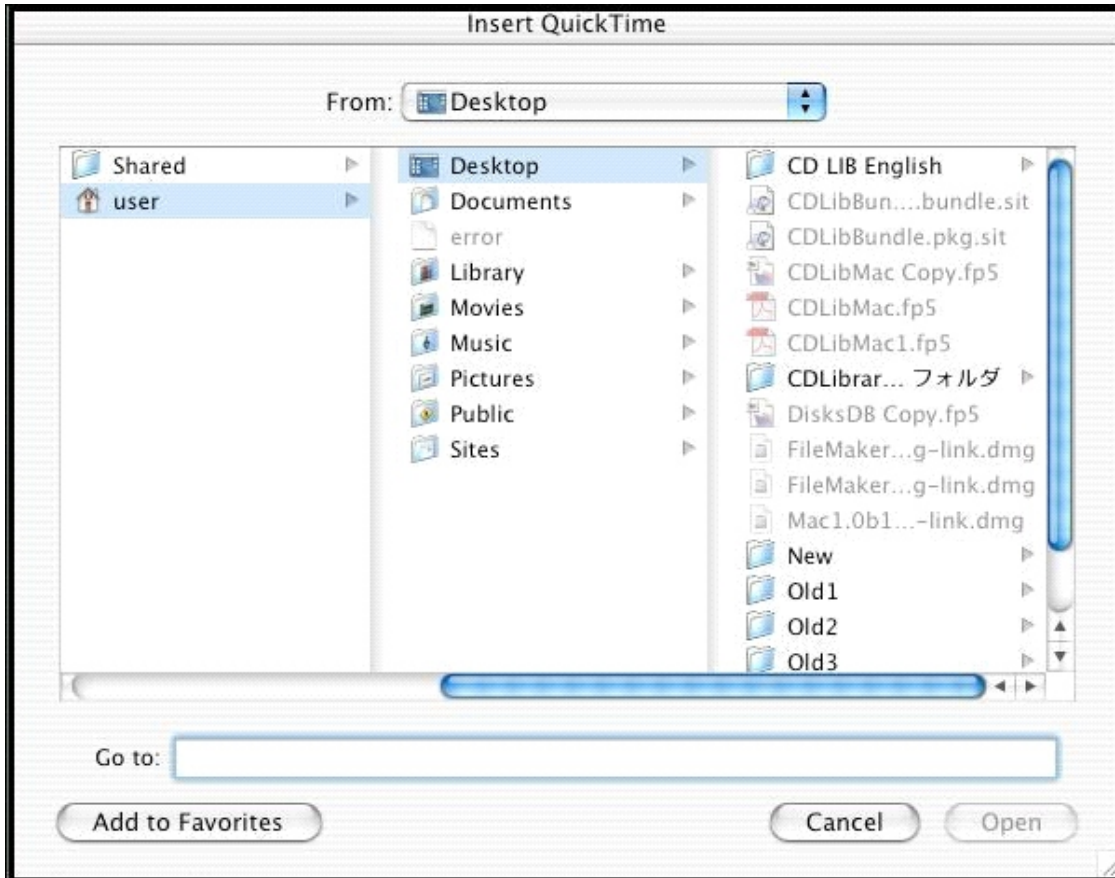


If you want to input still images of disc labels or cover pages into the software, you need to have a scanner. After scanning and saving the image, click 「load」 button, the following figure appears. Indicate the path of images and the picture will be shown in the blank of 「picture」.

If you want to erase the picture, just click 「clear」. If you want to zoom the picture, just click 「zoom」 button.

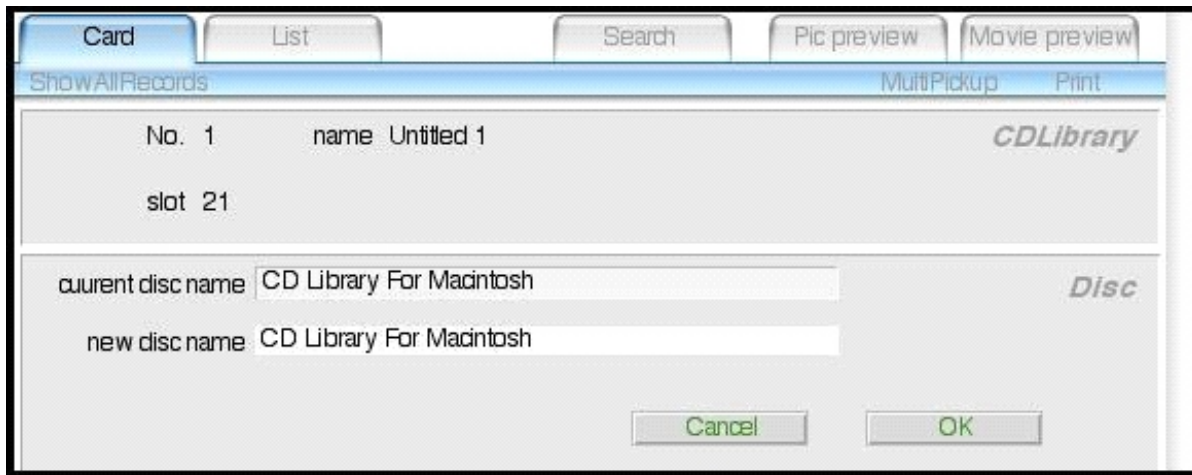


Click 「load」 below movie blank when you import short movies. A window will show up. Indicate the path of short movies and they will be shown in the blank of 「movie」. If you want to erase the short movies, just click 「clear」. If you want to zoom the short movies, just click 「zoom」 button.



(Important !!) After you have input one disc data, you can change the disc name by clicking 「change disc name」.

Sometimes you correct disc name in [List] tab and software will assume it is a new record and erase the data in 「remark」 and 「content」. You need to input the old disc name back to show up the data in 「remark」 and 「content」. And then use 「change disc name」 to correct the disc name.



CD/DVD Storing

- Storing CD/DVD to CD Library machine with using software.

After finishing inputting disc information, you can store discs into CD Library machine. Click 「Pickup CD」, round disc holder will rotate itself to the corresponding slot, then put the disc into the machine.

- Storing CD/DVD to CD Library machine without using software.

In the product package, you find a 「Management form」. You can write the disc names and categories in the form. Once you want to find a disc without using software, find the disc and number. Turn the knob on the machine to the right number, just press the knob and machine will find the slot and pop up the disc automatically.

- **CD/DVD Searching**

We are going to describe about searching a disc, which has already stored in the machine.

There are 2 ways to find a disc: Card mode and List mode

- 「SEARCHING IN CARD MODE」

Click 「Card」 tab, then click 「Search」 tab, you will see the screen like following figure.

The screenshot shows a software interface for a CD Library. At the top, there is a menu bar with options: Card, List, Search (highlighted with a red circle), Pic preview, and Movie preview. Below the menu bar, there are several action buttons: ShowAllRecords, ShowOmitted, OmitRecord, OmitMultiple..., MultiPickup, Print, AddNewRequest, DuplicateRequest, DeleteRequest, RestoreRequest, ModifyLastRecord, and Find. The main interface area contains several input fields: 'No.' with a dropdown menu, 'name' with a text box, 'slot' with a dropdown menu, 'disc name' with a text box, 'category' with a dropdown menu, 'remark' with a large text area, and 'contents' with a large text area. The text 'CDLibrary' is visible in the top right, and 'Disc' is visible in the middle right.

Input the necessary condition for searching. Not all of the fields need to be selected. Following explanations for each item.

- (1) "NO." Field -> Click to show machine numbers, then select CD Library machine number.
- (2) "NAME" Field -> Click to show machine name, then select CD Library machine name.
- (3) "SLOT" Field -> Click to show slot number, then select slot number.
- (4) "DISC NAME" Field -> Input a disc name to search a specific disc. Input the keyword of the disc name.
- (5) "CATEGORY" field -> Click to show a Pull-Down Menu, then select the category. If you want to clear the selected category, just hit 「delete」 key.
- (6) "REMARK" Filed -> Input the keyword or number in the field to search.
- (7) "CONTENTS" Field -> Input the keyword or number in the field to search.
- (8) After you have entered the searching conditions, click 「Search」 button at the left side of the software. Numbers of discs that are fit the searching condition will appear at the left side of software. If you are searching in Card Mode, one data will be shown at one time. If you have found more than 1 data, click 「Up

- [**Note !!**] If you just want to print the current data, just click 「Print」, then choose 「Current data」.
- (10) If you want to clear search conditions and search again, just click 「Search」 tab.
- (11) To end this 「Searching in Card Mode」, click other tabs.

■ 「SEARCHING IN LIST MODE」

- (1) Click 「List」 tab, then click 「Search」 tab, you will see the screen like following figure.

NO.	slot	category	disc name
<input type="text"/>	<input type="text"/>	<input type="text"/>	<input type="text"/>

Input the necessary condition for searching. Not all of the fields need to be selected. Following explanations for each item.

- (1) "NO." Field-> Click to show machine numbers, then select CD Library machine number.
- (2) "SLOT" Field -> Click to show slot number, then select slot number.
- (3) "DISC NAME" Field -> Input a disc name to search a specific disc. Input the keyword of the disc name.
- (4) "CATEGORY" field -> Click to show a Pull-Down Menu, then select the category. If you want to clear the selected category, just hit 「delete」 key.

- (5) in List Mode, all data will be shown at one time. If you have found more than 1 page, click 「Up Page」 or 「Down Page」 to see other data.
- (6) Click 「Print」 on the command line to print searched result.
- [**Note !!**] If you just want to print the current data, just click 「Print」, then choose 「Current data」.
- (7) If you want to clear search conditions and search again, just click 「Search」 tab.
- (8) To end this 「Searching in List Mode」, click other tabs.

■ What Keyword do you need to input when you search

Category Field:

Click to show a Pull-Down Menu, and then select the category. If you want to clear the selected category, just hit 「delete」 key.

Disc Name Field:

Example 1. Finding disc name: United States of America
 Keyword 1 United:(Choose one of these: United, Uni, Uni*, *ni*, *ite*, *ited) or Keyword 2 States: (Choose one of these: States, sta, sta*, *tat*, *ate*, *ates) or Keyword 3 of : (Choose one of these: of, o, *f) or Keyword 4 America: (Choose one of these: america, amer, amer*, *eri*, *Erica)

These are the 20 keywords and you just input one of these keywords, hit 「enter/return」 or button 「find」

Example 2. Your database has pin, pinball, and pincushion
 Keyword: pin or pin* Results: pin, pinball, and pincushion

Keyword: =pin Results: pin

Example 3. Your database has Ball, Basketball, Baseball, and Pinball

You want to find a ball game and play with it.

Keyword: ball Results: ball

Keyword: *ball Results: ball, basketball, baseball, and pinball

Example 4. Your database has Windows 98, Windows ME, Windows 2000, and Antivirus 98

You want to find a Windows OS, and you want to see all of them.

Keyword: win Results: Windows 98, Windows ME, and Windows 2000

Keyword: win* Results: Windows 98, Windows ME, and Windows 2000

Keyword: *dow* Results: Windows 98, Windows ME, and Windows 2000

Keyword: *dows Results: Windows 98, Windows ME, and Windows 2000

Keyword: 98 Results: Windows 98, and Antivirus 98

● **CD/DVD Retrieving**

There are several ways to retrieving a disc.

[**Note !!**]When you retrieving a disc, you need to open the door in the CD Library machine first. If the door is closed discs will not be popped up.

■ **Retrieving in Card Mode**

After you have searched in Card mode, choose the disc you might want to have. Then click 「Pickup CD」. The CD Library machine will find the slot and pop up the CD for you.

Click 「Up Page」 or 「Down Page」 on the (Book icon) to find other disc. Then click 「Pickup CD」, the CD Library machine will find the slot and pop up the CD for you.

■ **Retrieving in List Mode**

After you have searched in List mode, choose the disc you might want to have. Then click 「Pickup CD」. The CD Library machine will find the slot and pop up the CD for you.

Click 「Up Page」 or 「Down Page」 on the (Book icon) to find other disc. Then click 「Pickup CD」, the CD Library machine will find the slot and pop up the CD for you.

■ Retrieving in 「Picture Preview」 Mode

Click 「Pic preview」 tab, it show all of the list of picture, just click the disc you might want to have, then click 「Pickup Disc」, the CD Library machine will find the slot and pop up the CD for you.

■ Retrieving in 「Movie Preview」 mode

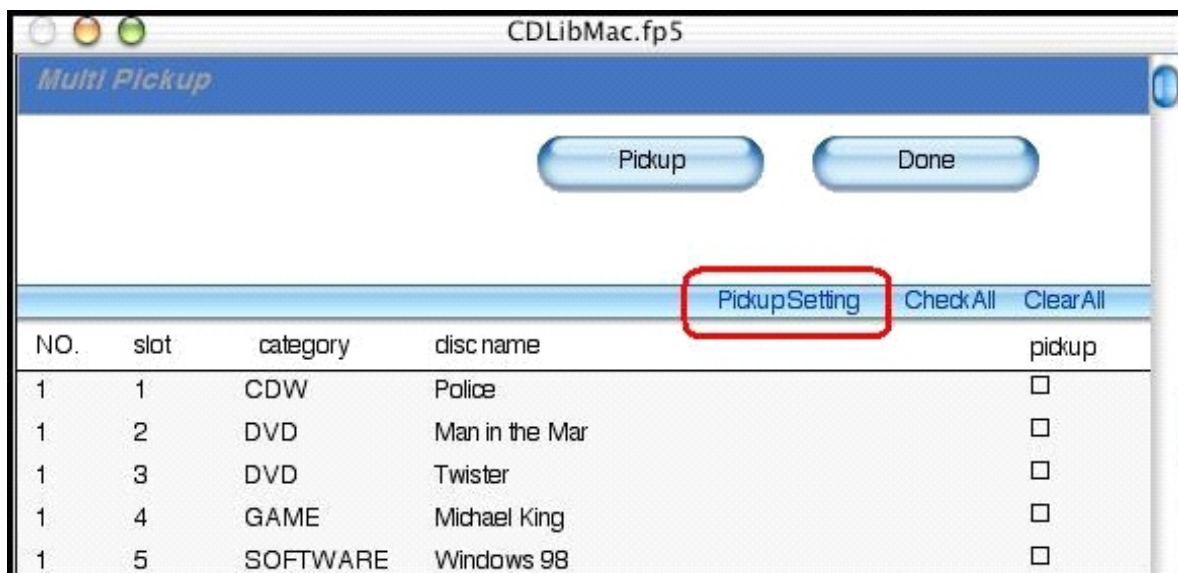
Click 「Movie preview」 tab, it show all of the list of short movies just click the disc you might want to have, then click 「Pickup Disc」, the CD Library machine will find the slot and pop up the CD for you.

■ Multi-Pickup

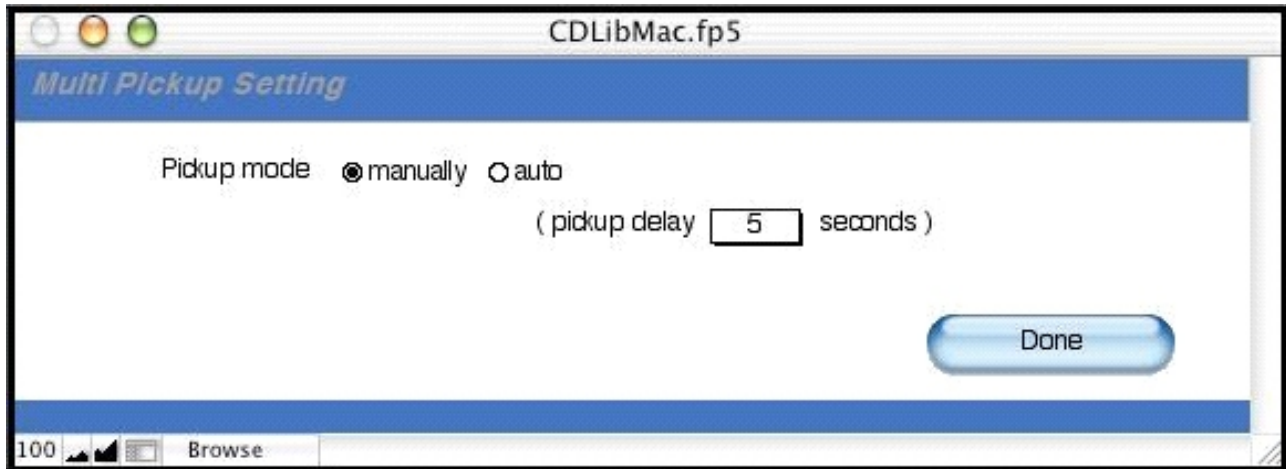
This function is for people who want to retrieve some discs at the same time. It is easy and convenient.

(1)Pickup Setting

Click 「Search」 tab, then 「MultiPickup」, a 「Multipick up」 will be shown. Click 「PickupSetting」

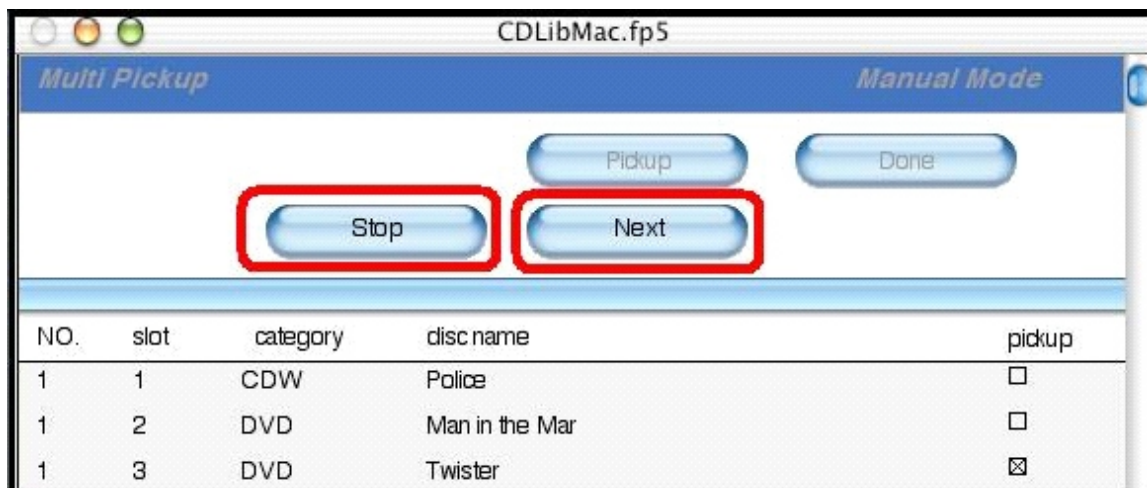


Choose 「Pickup Mode」 (manually or auto). Default is 「manual」. Manually and Auto modes are described as following text.



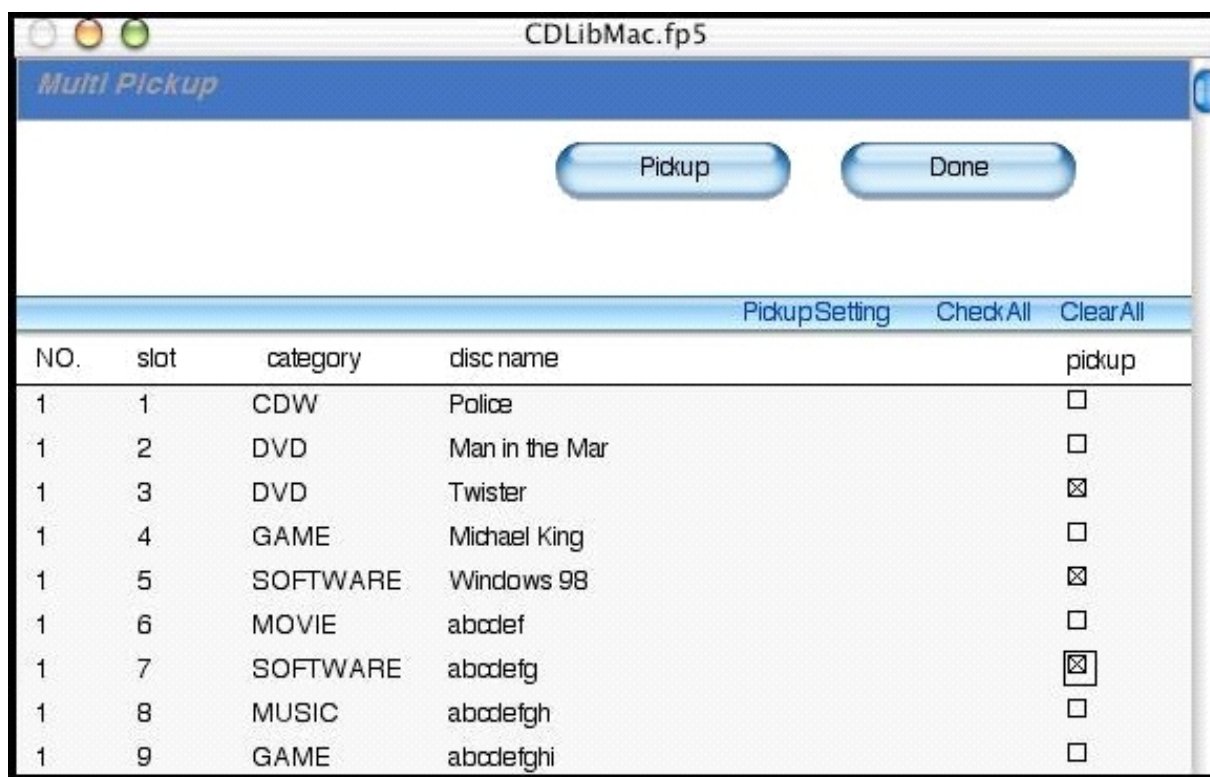
(2) MultiPickUp in 「Manually」 mode

After searching in 「Search」 mode, click 「MiltiPickup」 in the command line. All of the result will be in one list. Just select the discs you might want to have and then click 「Pickup」 CD Library machine will find the discs for you, you need to click 「Next」 manually to get next discs.



Click 「Stop」 button whenever you want to terminate this command.

Click 「Done」 button to end 「MultiPickup」



(3) MultiPickUp in 「Auto」 mode

You need to click 「Next」 to get the next discs, but when you choose 「Auto」 mode, it is not necessary to click 「Next」 button. Software will get the next discs at least 5 seconds (You can change the value in 「PickUp Setting」)

[Note !!] You can not set 「pickup delay」 less than 5 seconds. Too short delay time could damage the discs and CD Library machine.

● Printing

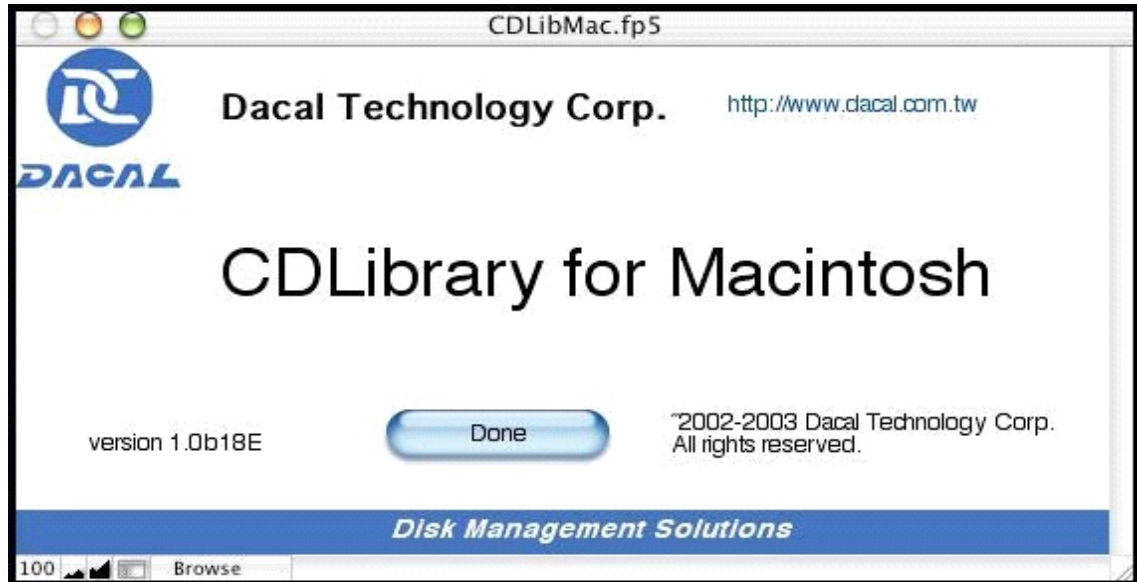
Click each tabs, you can see 「Print」 function in the command line. Click here to print the data you want to have.

- **Functions**

- **Functions in Main screen**

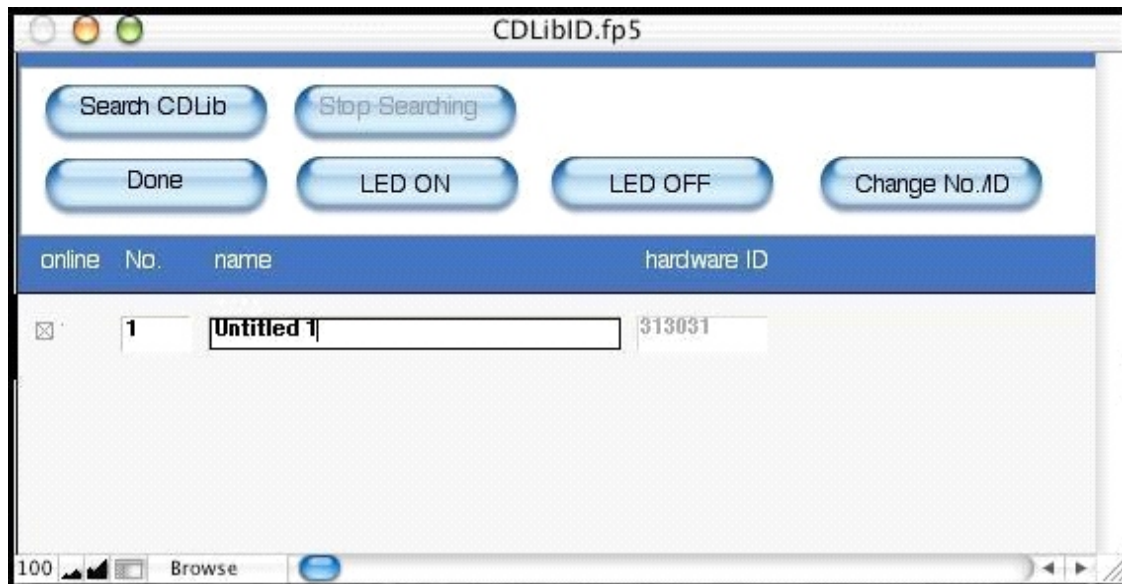
- 「About Dacal」 button

Click here to show copyright and web site of Dacal Technology Corp.



- 「CDLib Setting」 button

Click here to show CD Library machines settings. You can set the name of each machine, change the number or ID



[CDLibID] FUNCTIONS :

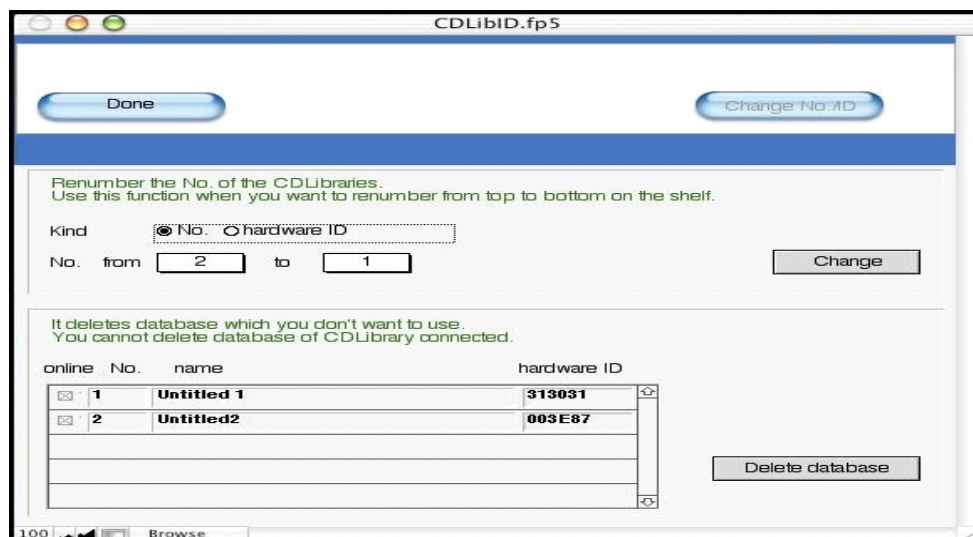
[Search CDLib] Maybe you have many CD Library machines, if you want to know which CD Library is which, you might want to use this function to find the CD Library machines.

[LED ON] Selected CD Library machine display is blinking.

[LED OFF] Selected CD Library machine display is not blinking.

[DONE] Terminate this command

[CHANGE NO./ID] Click this button , the following figure shows up.



No. : Each CD Library contains 150 discs, if you have more than 150 discs, you need to have second or third CD Library machines. In the database, we use No. to verify each CD Library database. No.1 database has slot 1 to slot 150, No.2 database has slot 1 to slot 150, you can change the No. 1 to No.2, No.2 to No.1. These 2 database will be switched in the software.

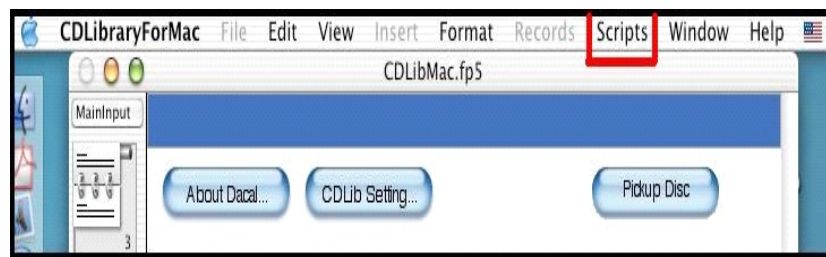
ID : Each CD Library has a unique number inside the chip. You can assign CD Library machine to the database No.1 or No.2. When you want to use No.1 database at a specific machine, you assign the ID number to the No.1. When you want to use No.2 database at another machine, you assign the ID number to the No.2 database.

Other Functions

● Change Password

You can set the password for the software, to prevent strangers from looking at your database. Please follow the instructions below:

Click 「Script」 on the top of the screen (in Menu Bar) and click 「Change Password」



「Change Password」 window appears, then input 「Old Password」, 「New Password」 Default of Old password is 「usr」

A screenshot of the 'Change Password' dialog box. It has three text input fields: 'Old Password:' containing 'usr', 'New Password:' containing 'cdlibrary', and 'Confirm New Password:' containing 'cdlibrary'. At the bottom, there are 'Cancel' and 'OK' buttons.

After you have changed password, and you want to cancel password procedure when you start software, then reset New Password as 「usr」

● BackUp Database

■ Backup Instructions

The software has 2 files for saving database 「CDLibMac.fp5」 and 「DiskDB.fb5」. Software will backup database to these 2 files when you click 「BackupDatabase」 on the top of the screen (in the Menu Bar).

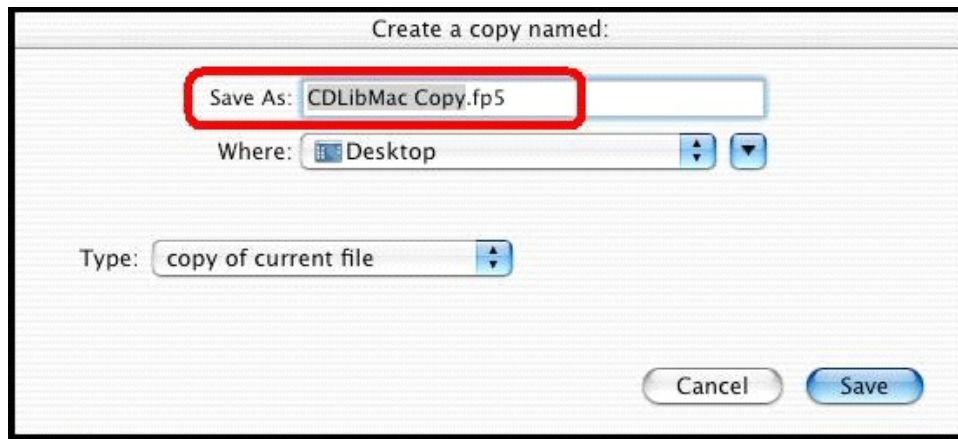
Please follow the steps:

Click 「Script」 on the menu bar.



? Click 「BackupDatabase」, a window shows up.



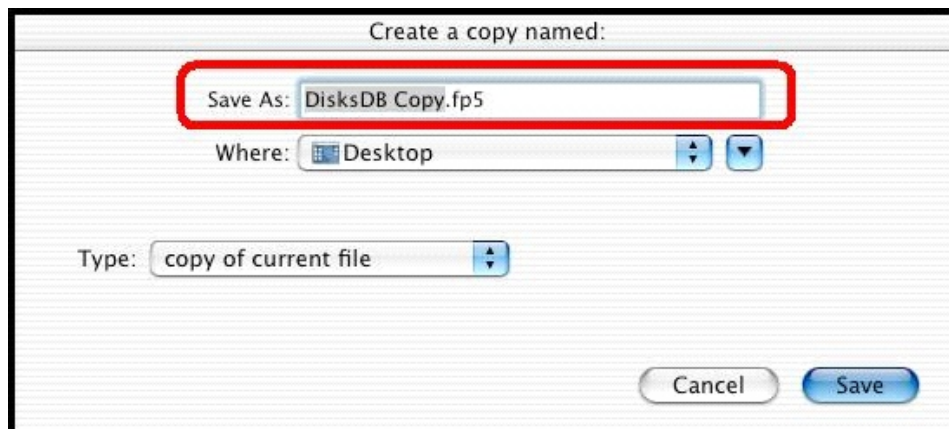


Default file name: 「CDLibMac Copy.fp5」, then select the saving path (Where:).

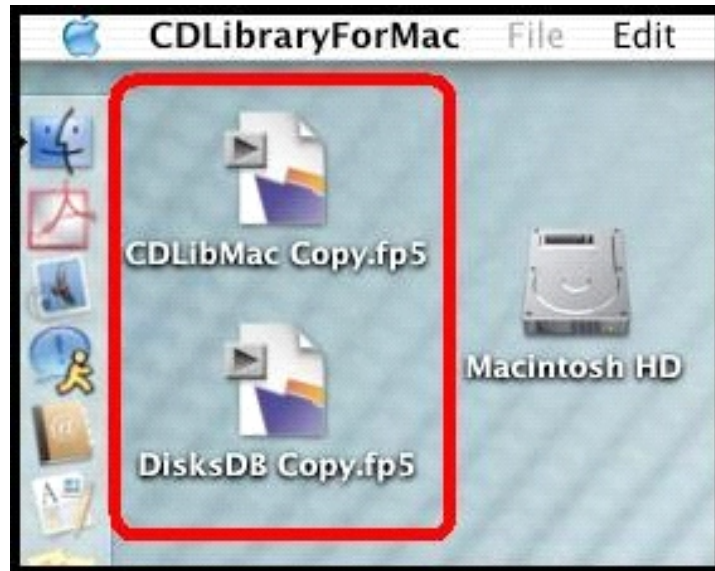
Select 「Type:」 for (copy of current file) or (compressed copy) or (clone), and then click 「Save」

A window shows up and the file name is 「DiskDB Copy.fp5」, select the saving path (Where:).

Select 「Type:」 for (copy of current file) or (compressed copy) or (clone), and then click Save



Two files 「CDLibMac Copy.fp5」 and 「DisksDB Copy.fp5」 will be created to the indicated path.



Just rename 「CDLibMac Copy.fp5」and DisksDB Copy.fp5」
to 「CDLibMac.fp5」and 「DisksDB.fp5」

(Delete 「Copy」 word when you rename them)

1. Copy these 2 files to the folder 「CDLibraryForMac」
when you want to use this backup database.

