

PowerDrive

(DC-016RW)

User's Manual



- ★Do you have lots of CDs or DVDs?★
- ★Do you always use DVD burners to backup data or multi-media?★
- ★Do you know where you should keep those precious CD and DVD and how you can find them easily & quickly and read them automatically?★

The Multi-Media Manager with a Built-In DVD Optical Drive

PowerDrive is your BEST choice!

1997-2008 Dacal Technology Corp. All Right Reserved

No. 2-1 Lane 1206 Chung-Cheng Rd.,

Chung-Ho City Taipei Taiwan 235

<http://www.dacal.com.tw>

PowerDrive is registered trademarks or trademarks of Dacal Technology Corp.

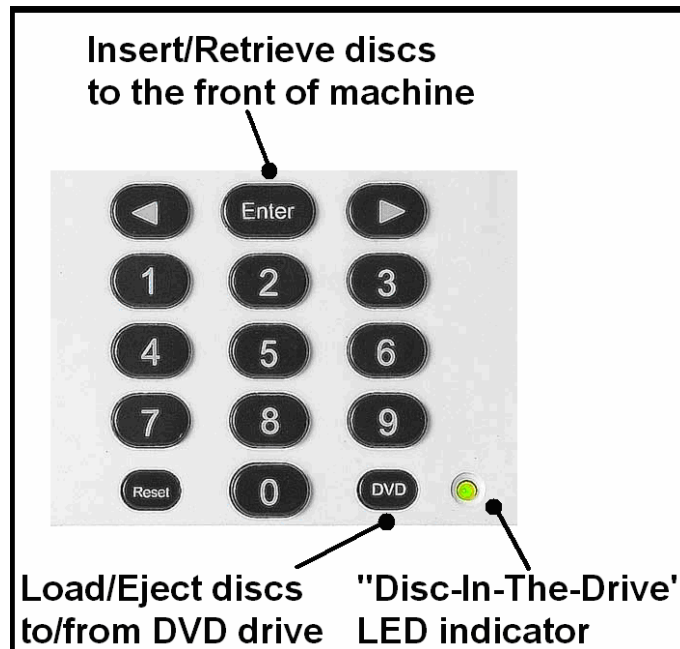
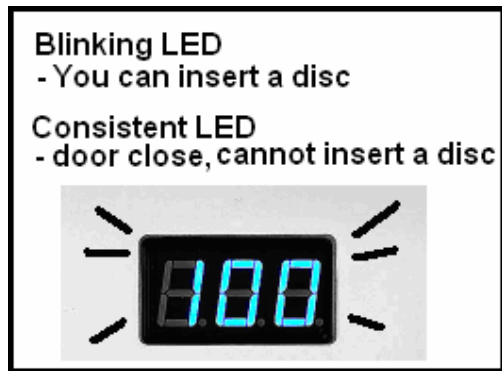
In Taiwan and/or other countries.

Windows OS is registered trademarks or trademarks of Microsoft Corp.

Table of Content

Introducing PowerDrive.....	1
Warning!!.....	2
Welcome to PowerDrive.....	3
Important and Basic Knowledge.....	3
Components in the box.....	4
Hardware Installation.....	5
Test after Installation.....	5
Stand-Alone Machine Operation.....	6
Installing the CD Library 5.0 Software.....	7
Basic Operations.....	12
Using CD Library 5.0.....	13
Understanding the Interface.....	13
Menu Bar.....	14
Tool Bar.....	14
PowerDrive DC-016 Control Bar.....	15
Main Database Area.....	16
For CD Library (DC-101) and CD Library II (DC-300) models.....	16
For PowerDrive (DC-016) model.....	17
Tree Directory.....	18
Additional Interface Menus.....	19
Managing CD Library.....	21
Using the File Menu.....	21
Backup Database.....	21
Restore Database.....	22
User Privileges.....	24
Using Function Menu.....	27
Using the System Setting Menu.....	28
Configuring System Setting.....	28
Setting a Password.....	30
Swap ID.....	30
Using the Help Menu.....	31
Using Tool Menu.....	31
Adding a New Category.....	31
Adding a New Disc.....	32
Search/Advanced Search.....	33
Insert/Retrieve Disc.....	34
Display and Mode Options.....	35

Introducing PowerDrive



Warning!!

This Manual provides essential information for the protection of the user and others possible injury and property damage. Please read this manual before using it. Always follow the instructions whenever using this product to prevent from any possible injury and property damage.

FCC Regulation

This machine has followed Chapter 15 of the FCC regulation regarding the Class B digital device for testing, and it is confirmed that it meets the requirement of the regulation. The foregoing regulation provides proper protection for the user in residential areas from being interfered by harmful electromagnetic wave. The design of the equipment will not interfere electronic communications. If there is any doubt about the interference source, please shut down the machine and test if there is any interference coming from this machine.

CE Standard

This machine passes the test of the European CE product certification, and will not generate electromagnetic interference (EMI) or will not be affected by EMI.

Using the product indoor

This product is designed as an electronic product for indoor use. Any damage caused by using the product outdoors is not our responsibility and such damage will not be covered by our guarantee or warranty.

Recommendations for this machine

To protect your precious discs from being damaged or scratched during its removal, please follow the 11 instructions below and try to hold the disc of its edge when possible. After finished using discs, remember to put it back to the original position so that it's easier to retrieve the next time. When the machine is not in use for a long while (for days/weeks), please shut it down by unplugging power adapter to save energy.

1. Do not close fire or locate in high temperature.
2. Do not hard push at the center of the top case.
3. Do not put heavy goods on the machine.
4. Do not pour any liquid into the machine.
5. Do not place any objects on the machine except for another PowerDrive machine.
6. Do not put foreign substance in the machine.
7. Do not put electrically conductive articles in the machine.
8. Do not tilt the machine.
9. Do not drop the machine.
10. Do not insert deformed or 8cm discs into the machine.
11. Do not split the machine apart.

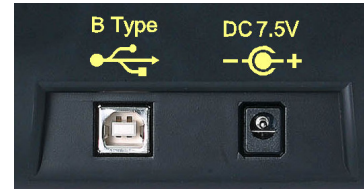
Welcome to PowerDrive

The Multi-Media Manager with a Built-In DVD Optical Drive

Thank you for choosing PowerDrive. The PowerDrive, the Multi-Media Manager with a Built-In DVD Optical Drive, can be controlled by a PC with USB 2.0 interface. The included software is designed for easy access to your data (it can be music/video/games/photo and ..etc) that stored on 5.25" optical media. **Reading this manual first is strongly suggested before using your PowerDrive.**

Important and Basic Knowledge:

- ★ PowerDrive uses output **7.5V, 2.4A or above** DC adapter, please must make sure the correct voltage before you plug it into the machine.
- ★ When you wish to insert an optical disc into PowerDrive, make sure **label side toward right**. Insert the disc slowly and gently, the sensor inside of the machine detects and rolls it into the machine smoothly. If the disc is inserted by the wrong side (I.e. toward left), DVD drive will not read the disc, and thus resulted in an error situation.
- ★ A maximum of 100 CD/DVDs can be stored in a PowerDrive machine. By using USB 2.0 interface, one computer is able to connect up to 127 machines, thus, you can store as many as 12,700 CD/DVDs to the maximum.
- ★ The CD Library 5.0 software that comes with the PowerDrive offers an efficient solution to manage your data that stored on optical media.
- ★ CD Library 5.0 software provides backward compatibility in supporting CD Library (DC-101), CD Library II (DC-300), and of course, the PowerDrive (DC-016RW) as well, you can control these 3 types of machines via the same computer simultaneously.
- ★ When connecting your PowerDrive to a computer via an USB cable, the built-in DVD drive inside the PowerDrive will be seen as an **external DVD drive on your computer**, also the PowerDrive provides 100 slots space for you to store optical discs. Even if you did not install the included CD Library 5.0 software, you are still able to control the machine by the 15 keys on the front-panel.
- ★ While the built-in DVD drive is reading a disc, you are still able to insert or retrieve other discs to/from the CD Library. Because of built-in memory, PowerDrive knows where the disc in the drive should go. If there is already an existing disc in the drive, you are able to load another disc into the drive. The carousel will spin to the previous number, and eject the disc to the slot first, and then spin to the number that you just selected before loading the disc into the drive.
- ★ For example, when a disc at slot 5 is in the DVD drive, you CANNOT insert or retrieve slot 5 again, in other words, **PowerDrive does not accept this command and shows "888" on display**, it prevents from inserting second disc in the same slot number.



Components in the box:

Please make sure the following goods are in the package. Contact your local dealer if there is anything missing:

- ◆ PowerDrive machine 1 pc
- ◆ CD Library 5.0 software disc 1 pc
- ◆ AC adapter 7.5V 1 pc
- ◆ USB 2.0 cable 1 pc
- ◆ User manual 1 pc
- ◆ Management form 1 pc

Computer System Requirement:

- ◆ An Intel-compatible CPU
- ◆ Windows 2000, XP or Vista (Note:)
- ◆ 256 MB of RAM or higher
- ◆ Free space of 100 MB for hard disk
- ◆ USB 2.0 slots

Note: CD Library 5.0 software supports Windows 2000 and XP, and Windows Vista.

Windows Vista is a much higher safe security operating system, Vista does not allow CD Library 5.0 to backup database to root "C:\\" or others in "C:\Windows" Except for "C:\Program Files\CDLIB" (Unless you use administrator right, you can backup database to anywhere.)

Safety Precautions

This product is designed with safety precaution. However, fire or electric shock might occur due to any misuse. To prevent these from happening, you must obey the following rules:

- ◆ When you don't understand some of these instructions, stop using this product. Please contact your local dealer.
- ◆ Please stop using the product when you find any problems.
- ◆ If you have found any strange or rupture of electric wire, you must stop using this product immediately and contact your local dealer.
- ◆ If you have found any weird sound, smell, or smoke, unplug the adapter immediately. Turn off the power and contact your local dealer.

Hardware Installation

1. Plug the adapter (7.5V, 2.4A or above) into the power source socket at the backside of the PowerDrive machine and plug-in the other end of the adapter to the power source outlet.
2. Insert the square end of the B-type USB cable into the PowerDrive machine, and then plug the A-type USB cable into a computer, you also need to have an external-powered USB HUB to connect multiple machines if you have more than one PowerDrive.

Note:

- ◆ If Windows OS asks the drivers when you plug in USB cable, do not select any HD drive or CD-ROM drive, system will find the default drivers from its database.
- ◆ Machines can be stacked to save spaces, however, a maximum of 3 PowerDrive Machines can be self-stacked (recommended).

Test After Installation

- ◆ When you plug in power cord to the machine, the carousel will rotate and position itself automatically. This action shows the power is connected properly. If there is something wrong with the machine, SOS (SOS) will be shown in the digital display.
- ◆ Open "Device Manager" in Control Panel, plug the USB cable into the computer. PowerDrive will be recognized as "Human Interface Device" and "HID-compliant Device", also there is another new DVD-RAM "Optiarc" added.

Simple Hardware Troubleshooting and Important Notice:

★ Please visit our web site for hardware troubleshooting:

<http://www.dacal.com.tw/dc016rwtroubleshooting.html>

★ PowerDrive has a built-in DVD drive, and it is recognized as "USB Mass Storage device" in device manager, before you unplug USB cable, we strongly recommend that you **HAVE TO** click "Safely Remove Hardware" icon in system tray.



★ If you hear weird sound in the DVD drive (because of inserting very bad optical disc), or you cannot eject a disc from the DVD drive, please unplug the power adapter of the machine, wait for 30 seconds and then power it on again. Try the same steps you were just doing or eject the disc again by pressing "DVD" button.

Stand-Alone Machine Operation:

Blinking LED

- You can insert a disc

Consistent LED

- door close, cannot insert a disc



- ◆ **Saving discs** – Power the machine on, PowerDrive spins carousel to slot 1, and digital LED display blinks, which means door is open, press “Enter” to close the door, and then select a slot number and then press “Enter”, the carousel spins to the corresponding number and then 3 digits LED blinks, when the LED blinks, it means you can insert a disc into the machine, **make sure that the “Label Side” of the disc is toward right**, insert a disc slightly, the sensor detects the disc and then roll the disc into the machine.
- ◆ **Retrieving discs** – Close the door, and select a number and then press “Enter”, the carousel spins to the corresponding number and the disc comes out (empty slot does not have a disc coming out), and then 3 digits LED blinks.
- ◆ **Loading a disc into the DVD drive** – Close the door first, and select a number and then press “DVD” button, the carousel spins the corresponding number toward DVD drive, and then start loading the disc into DVD drive. If there is an existing disc in the drive, carousel spins to the previous number and eject the disc to previous slot, and then spins to the number that you just selected and then load the disc into the drive.
- ◆ **Ejecting a disc out of the DVD drive** – If the “Disc-In-The-Drive” LED indicator is on, you can press “DVD” button **once** to eject the disc in the drive. If the “Disc-In-The-Drive” LED indicator is off, nothing happen after you press “DVD” button. If the “Disc-In-The-Drive” LED indicator is on, you press “DVD” button for **5 seconds** to eject the disc into the slot and then carousel spin the slot to the front door, and roll the disc out of the machine, thus you can retrieve the disc for other purpose.

Installing the CD Library 5.0 Software

Prior to installing the software perform the following:

- Connect the PowerDrive (DC-016RW) or CD Library II (DC-300) device to a power source and an USB port of the computer (do not use any USB hub if this is the first time installing CD Library).
- Insert the CD Library 5.0 software CD to begin your installation.

Installing the Software

After placing the CD Library 5.0 software in the CD-ROM drive, the auto play of **CD Library 5.0** installation screen displays.

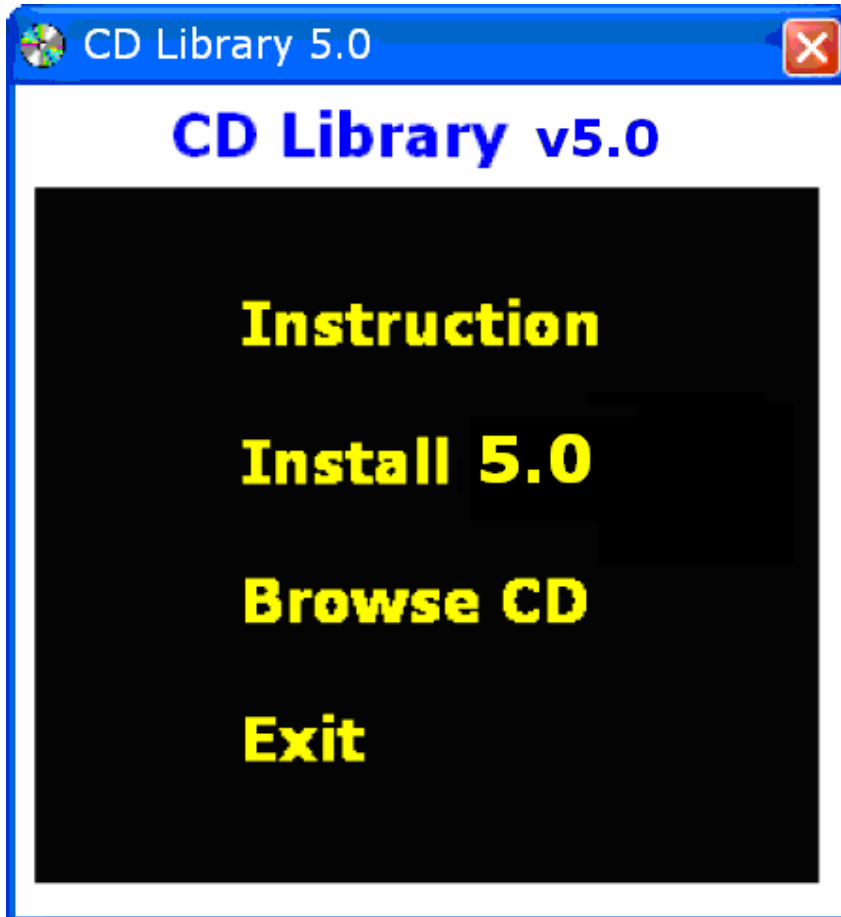


FIGURE 2. CD Library Installation screen

FIGURE 4. Select **Install 5.0**.

The **Installer Language** screen displays.

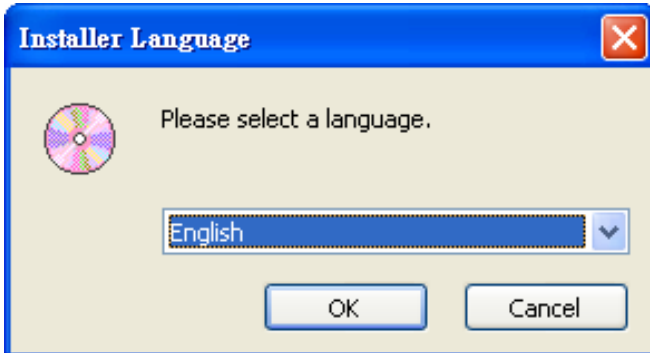


FIGURE 3. Language screen

FIGURE 4. Select "English" and then click **OK** to continue. After installation and open software, you are able to change UI (User Interface) languages if you need (Chinese, German, Japanese and others.)

The **Welcome to the CDLIB 5.0 Setup Wizard** screen displays.



FIGURE 4. CDLIB 4.0 Setup Wizard screen

3. Click **Next** to continue.

The **Choose Components** screen displays.

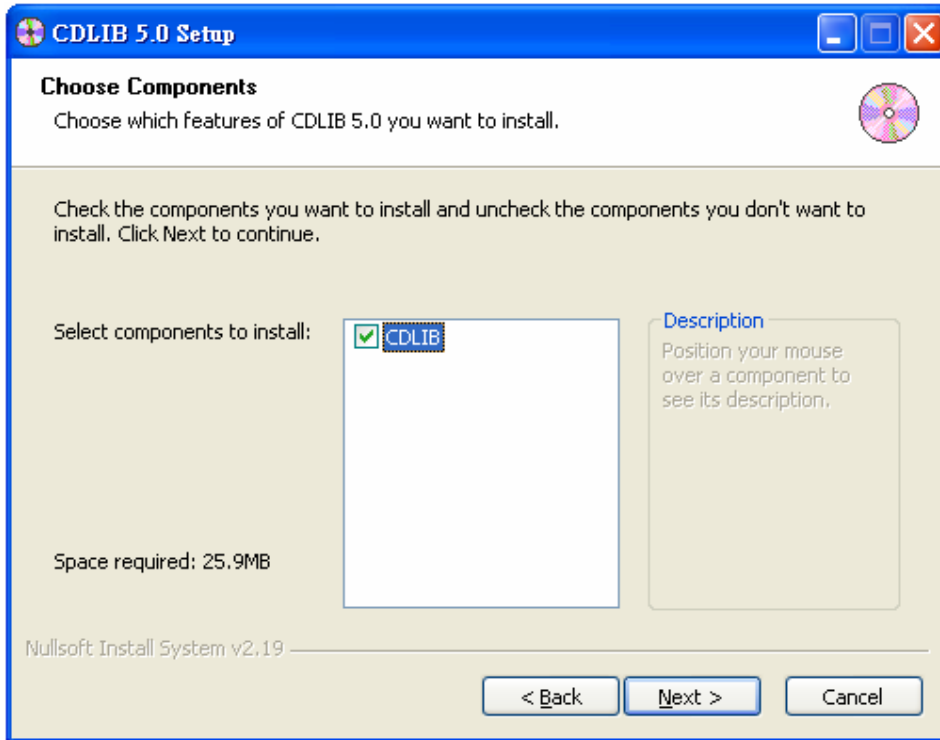


FIGURE 5. Choose Components screen

4. Select **CDLIB**.

5. Click **Next** to continue.

The **Choose Install Location** screen displays.

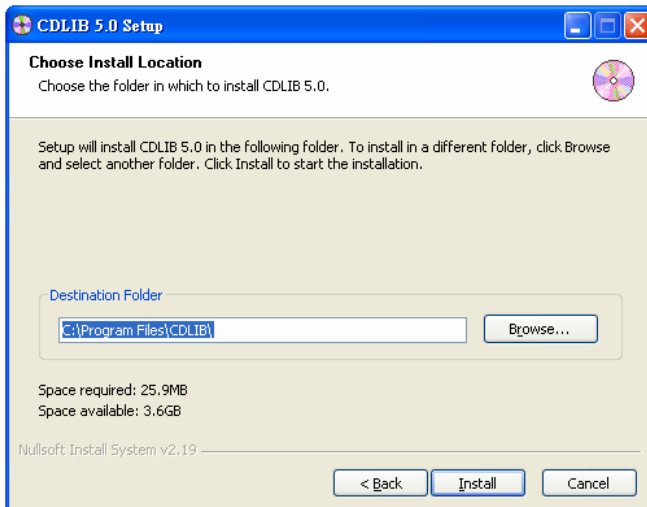


FIGURE 6. Choose Install Location screen

The default destination folder is C:\Program Files\CDLIB.

6. Click Install.

The **Installing** screen displays indicating that CD Library 5.0 installation is in progress.

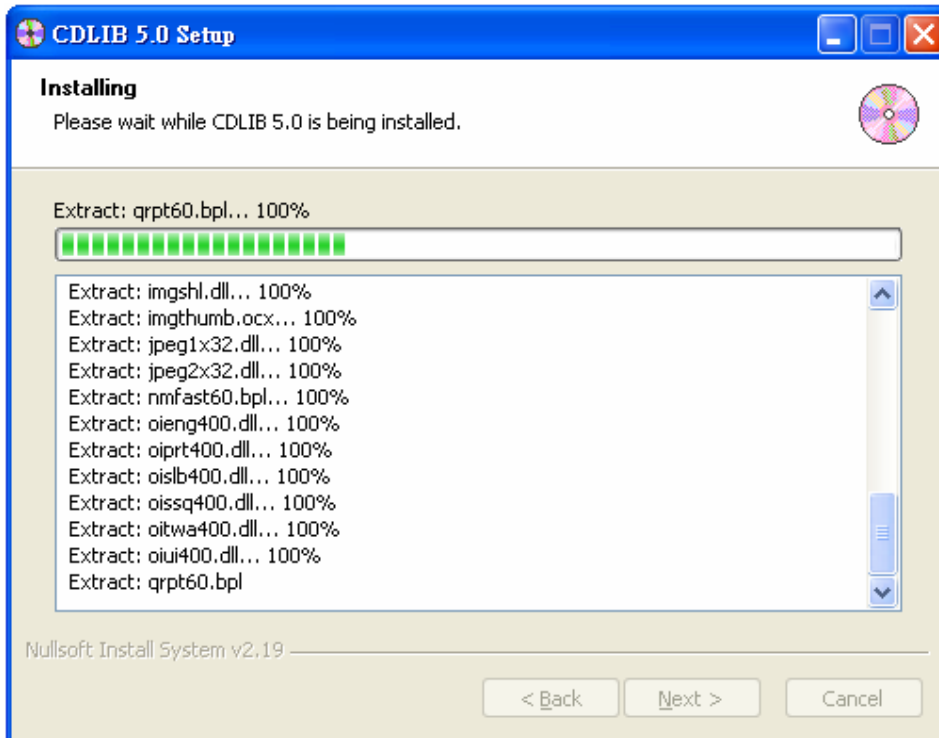


FIGURE 7. Installing screen

7. When complete, click Next to continue.

The **Registry Editor** screen displays.

8. Click Yes to store the settings and options in the database.

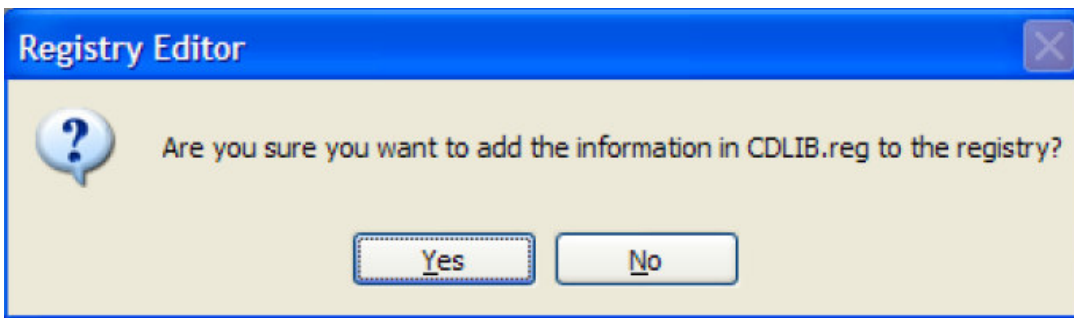


FIGURE 8. Registry Editor screen

9. Click **Finish** to run CDLIB 5.0.

The **Completing the CDLIB 5.0 Setup Wizard** screen displays.

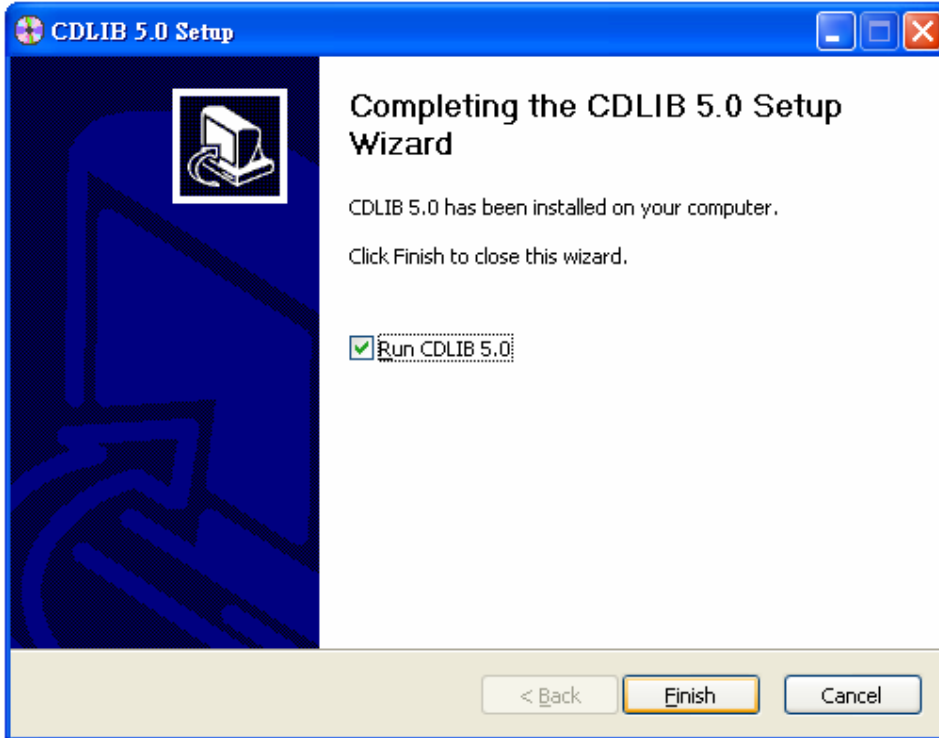


FIGURE 9. Completing the CDLIB 5.0 Setup Wizard screen

10. Enter the machine name.

For example: As seen in Figure 10, the machine number is 200392. (Every machine has a unique number, and software manages multiple machines by recognizing different unique numbers.)

The **Add new machine** screen displays.

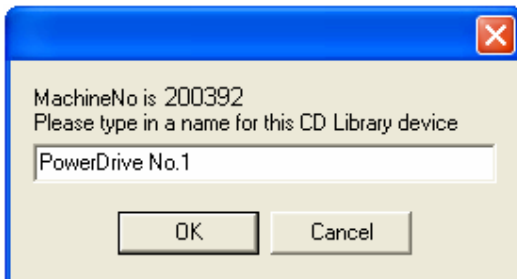


FIGURE 10. Add new machine screen

11. Click **OK**.

Installation is now complete. For more information on using the CD Library 5.0, see Basic Operations on the following description.

Basic Operations

There are several ways to run your CD Library 5.0 software.

- Double-click or right-click on the **CDLIB** shortcut located on the desktop.

The icon is as seen in the figure below:



CDLIB 5.0

FIGURE 11. CDLIB icon

Or

- Navigate to **Start**, click **All Programs** go to **CDLIB 5.0** and then select **CDLIB 5.0**.

Or

- Navigate to C:\Program Files\CDLIB to execute CDLIB.exe directly.

Using CD Library 5.0

Understanding the Interface

The following screen provides a brief definition of the various menu elements for the Graphical User Interface (GUI), which includes the **Menu Bar**, the **Tool Bar**, the **PowerDrive DC-016 Control Bar**, the **Main Database Area**, and the **Tree Directory**.

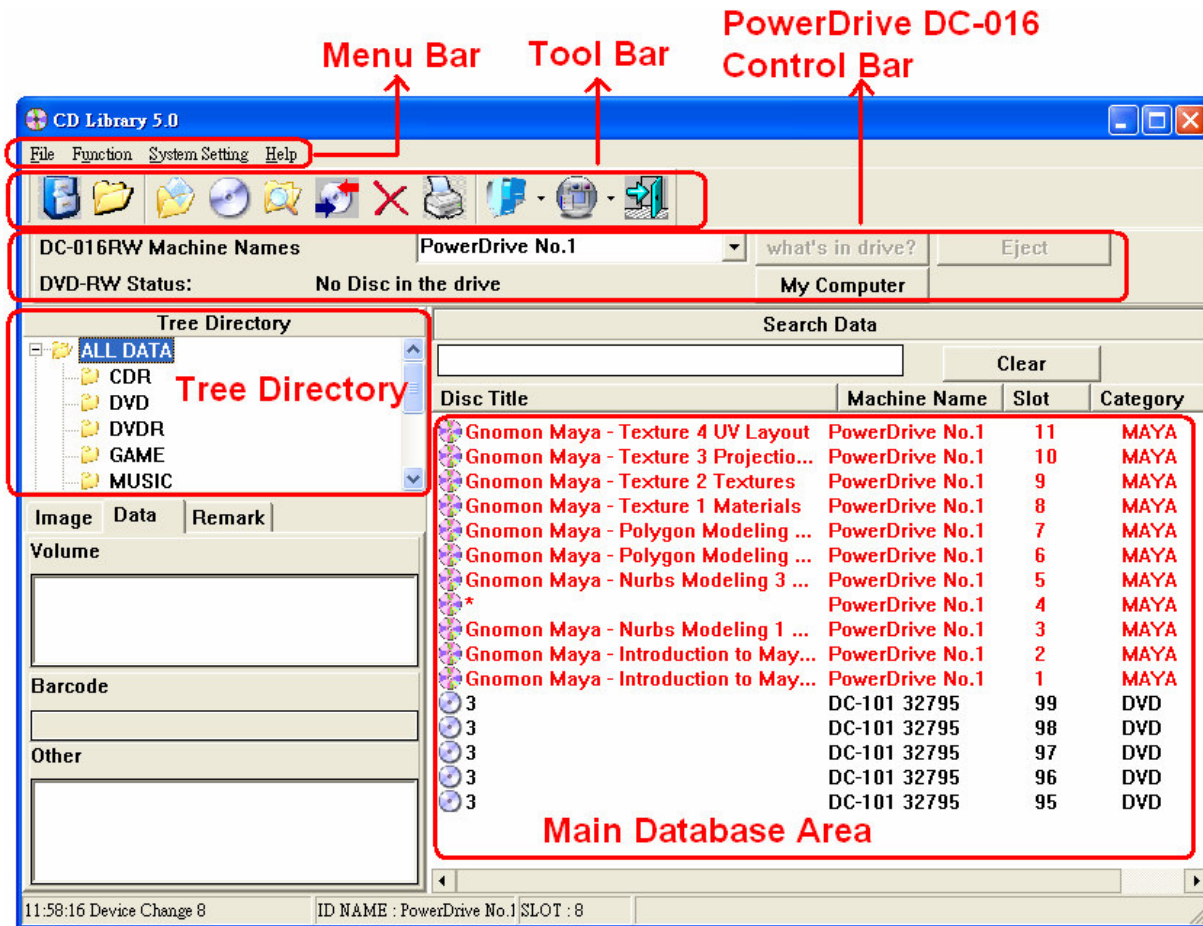


FIGURE 12. CD Library UI screen

Menu Bar

File Function System Setting Help

FIGURE 13. Menu Bar

The **Menu Bar** (as indicated in FIGURE 13.) contains the following functions:

- File: Backup and Restore databases, print and Close functions.

See Using the File Menu on page 21.

- Function: Power on/off and reset functions. See Using the Function Menu on page 27.

• System Setting: System setup, setting password and swap ID (machine names) functions. See Using the System Setting Menu on page 28.

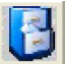








- Help: About CD Library 5.0 and On-Line Help function. See Using the Help Menu on page 31.



Tool Bar



FIGURE 14. Tool Bar

The **Tool Bar** as indicated in FIGURE 14. contains the following functions:

-  Backup: Saves database to allocated drive.
-  Restore: Restores database for use.
-  Add New Disc: Adds new Disc Entry to library.
-  Add New Category: Adds new category to library.
-  Advanced Search: Search function with advanced options.
-  Insert/Retrieve Disc: Ejects and inserts disc into device.
-  Delete: Removes data entry from library.
-  Print: Provides a print out of library entries.
-  Display: Displays entries by Detail, List and Icon style.

-  Mode: View **Tree Directory** in "By Category" or "By Machine" display.
-  Exit: Close CD Library software.

For detailed information regarding the usage of the **Tool Bar** menu, see Using the Tool Menu on page 31.

PowerDrive DC-016 Control Bar



Figure 15. PowerDrive DC-016 Control Bar

Only when PowerDrive (DC-016) machines are connected, PowerDrive DC-016 Control Bar appears. In other words, when you only connect CD Library (DC-101) and CD Library II (DC-300) machines into the computer, this control bar will be disabled and not be showed. CD Library 5.0 is able to control these 2 models (DC-101 and DC-300) as well. Once you connect a PowerDrive (DC-016) machine, the control bar then appears.

Note: CD Library 4.0 and backward versions are not able to support PowerDrive machines.

Note: Click drop down bar and select one of the PowerDrive names to update the DVD-RW status.



- ★ Normally, CD Library 5.0 updates DVD-RW Status automatically, if you press "DVD" button on the keypad on the machine to eject a disc, you will need to click drop down list and select the name of PowerDrive to update this PowerDrive's DVD-RW status.
- ★ Only the names of PowerDrive (DC-016) machines will be shown in "**DC-016RW Machine Names**"
- ★ DVD-RW Status shows "**Slot XXX in the drive**", "**No disc in the drive**", and "**Checking**".
- ★ "**what's in drive?**" shows the title and other information of that disc which is currently in the drive.
- ★ Navigate content of the disc in the drive by pressing "**My computer**".
- ★ You can make the disc back to the original slot if you press "**Eject**".
- ★ If there is no disc in the drive, "what's in drive?" and "Eject" buttons are disable.

Main Database Area

CD Library 5.0 supports CD Library (DC-101) and CD Library II (DC-300) and PowerDrive (DC-016) models.

The capacity of CD Library (DC-101) and CD Library II (DC-300) are 150 discs.

The capacity of PowerDrive (DC-016) is 100 discs.

Therefore, we use **black color** to show databases of CD Library (DC-101) and CD Library II (DC-300) for 150 titles on each machine, and **red color** to show databases of PowerDrive (DC-016) for 100 titles on each machine.

Disc Title	Machine Name	Slot	Category
Database of PowerDrive #1	PowerDrive No.1	3	DATA
Database of PowerDrive #2	PowerDrive No.1	2	DATA
Database of PowerDrive #3	PowerDrive No.1	1	DATA
Database of CD Library (DC-101) #1	DC-101 32795	99	DVD
Database of CD Library (DC-101) #2	DC-101 32795	98	DVD
Database of CD Library (DC-101) #3	DC-101 32795	97	DVD
3	DC-101 32795	96	DVD
3	DC-101 32795	95	DVD
3	DC-101 32795	94	DVD
3	DC-101 32795	93	DVD

You can double click an item to select a slot.

or

Select an item in the **Main Database Area** and right-click to view the following sub-menu options as seen in the following description.

For CD Library (DC-101) and CD Library (DC-300) models:

Disc Title	Machine Name	Slot	Category
Database of PowerDrive #1	PowerDrive No.1	3	DATA
Database of PowerDrive #2	PowerDrive No.1	2	DATA
Database of PowerDrive #3	PowerDrive No.1	1	DATA
Database of CD Library (DC-101) #1	DC-101 32795	99	DVD
Database of CD Library (DC-101) #2	DC-101 32795	98	DVD
Database of CD Library (DC-101) #3	DC-101 32795	97	DVD
3	DC-101 32795	96	DVD
3	DC-101 32795	95	DVD
3	DC-101 32795	94	DVD
3	DC-101 32795	93	DVD

- Edit Title: Edit the disc title.
- Remove Disc: Remove the disc from the library. A **Confirm** screen displays, Click **OK** to delete current data.
- Insert/Retrieve: Insert or retrieve a disc from the **CD Library or PowerDrive devices**.
- Print: Print the disc titles in an excel format. The **Print Management** screen displays. Click **Print**.
- Edit: Edit the disc title information. For example, the user can delete and add another **Image** for a disc (as seen in FIGURE 17.).

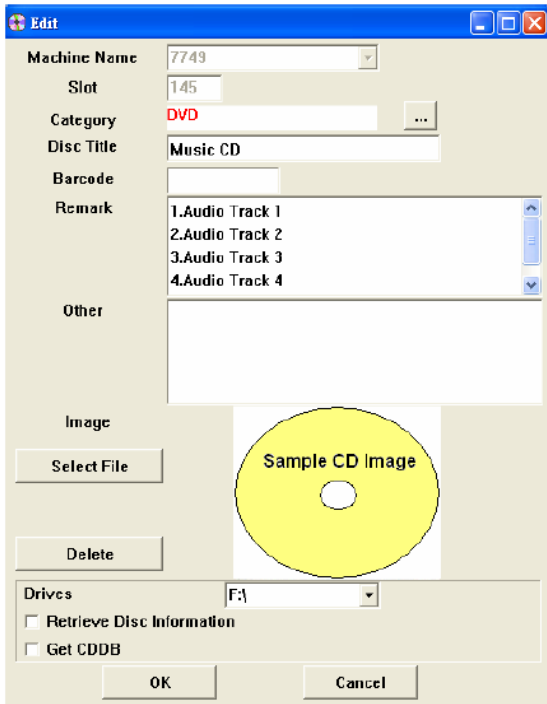


FIGURE 17. Edit screen

For PowerDrive (DC-016) model:

Disc Title	Machine Name	Slot	Category
Database of PowerDrive #1	PowerDrive No.1	3	DATA
Database of PowerDrive #2	PowerDrive No.1	2	DATA
Database of PowerDrive #3	PowerDrive No.1	1	DATA
Database of CD Library [DC-016]	101 32795	99	DVD
Database of CD Library [DC-016]	101 32795	98	DVD
Database of CD Library [DC-016]	101 32795	97	DVD
3	101 32795	96	DVD
3	101 32795	95	DVD
3	101 32795	94	DVD
3	101 32795	93	DVD

First 5 features are the same as above.

- Eject: If the "Disc-In-The-Drive" LED indicator is on, or DVD-RW Status shows "Slot XXX in the drive", you can click "Eject" to eject the disc in the drive. If the "Disc-In-The-Drive" LED indicator is off, or DVD-RW Status shows "No disc in the drive", nothing happen after you click "Eject".
- Load: By clicking "Load", the carousel spins the corresponding number toward DVD drive, and then start loading the disc into DVD drive. If there is an existing disc in the drive, carousel spins to the previous number and eject the disc to previous slot, and then spins to the number that you just selected and then load the disc into the drive.

Tree Directory

The tree directory as seen in FIGURE 12. allows the user to add, search, rename, and delete a disc. Right-click to view the submenu options as explained in the tables below.

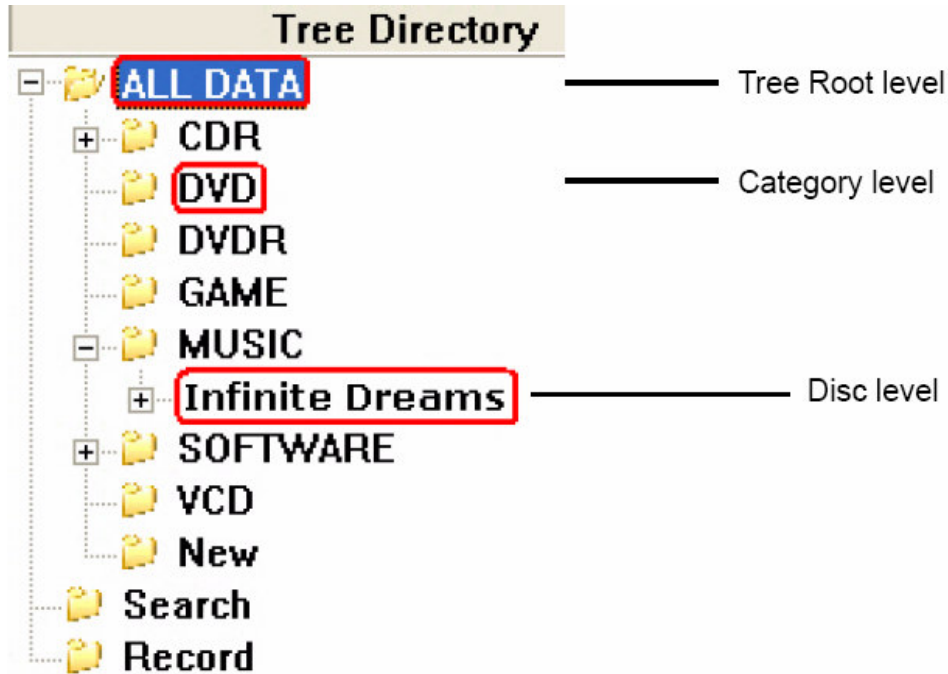


FIGURE 18. Tree Directory screen

Tree Root level

Item	Description	Refer to
Add New Category	To add a new category	Page 14
Advanced Search	To search for a disc with advanced options	Page 33

Table 1: ALL DATA

Category level

Item	Description	Refer to
Add New Disc	To add a new disc	Page 32
Rename	To rename a disc	-
Delete Category	To delete a category	-
Advanced Search	To search for a disc with advanced options	Page 33

Table 2: Category

Disc level

Item	Description	Refer to
Insert/Retrieve Disc	To get a disc	Page 34
Edit Title	To edit a disc title	Page 16
Remove	To delete a disc	-

Table 3: Disc

Additional Interface Menus

Additional Interface menus are located below the Tree Directory menu. The additional menus include: Image, Data and Remark. The three types of categories are seen in FIGURE 12.

Image

Select the image tab to view the uploaded image of a particular entry.

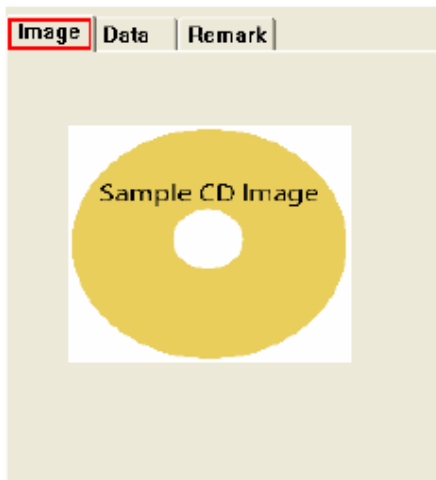


FIGURE 19. Image screen

Data

Select the **Data** tab to display the disc information of a particular entry.



FIGURE 20. Data screen

The following information can be found in the **Data** tab

- **CD Title:** Displays the CD title that you entered while adding a new disc.
- **Library:** Displays the unique machine ID number.
- **Category:** Displays the category the disc belongs. For example Music, Software, VCD, DVD.
- **Location:** Displays the slot number of the disc inserted in the CD Library.
- **Volume Name:** Displays the volume name of the disc.
- **Serial Number:** Displays the serial number of the disc.
- **Barcode:** Displays the barcode of the disc.
- **Other:** Displays the information entered while adding a new disc.

Remark

As seen in the figure below, the Remark tab displays a list of songs for a music CD.



FIGURE 21. Remark screen

Managing CD Library

The menu options in the **Menu Bar** are described in detail in this description. See FIGURE 12. for reference.

Using the File Menu

As shown in the figure below, the **File** tab in the **Menu Bar** has four functions in the CD Library:



FIGURE 22. File screen

Databases

A database is your personal collection of information stored in a library format. There are two types of database formats supported by CD Library software:

- 3.5 database (DB)
- 4.0 database (MDB)

The default destination is C:\Program Files\CDLIB\Backup once the CD Library 5.0 is installed.

Backup Database

As an Administrator you can backup your database to any drive. An appropriate backup destination is D:\ or C:\Program Files\CDLIB\Backup. Follow the steps below to backup your database. (CD Library 4.0 generates CDLIB.MDB, CD Library 5.0 generates CDLIB2.MDB)

1. Navigate to File in the Menu Bar and select Backup

Database. A dialog box displays as shown in the figure below.

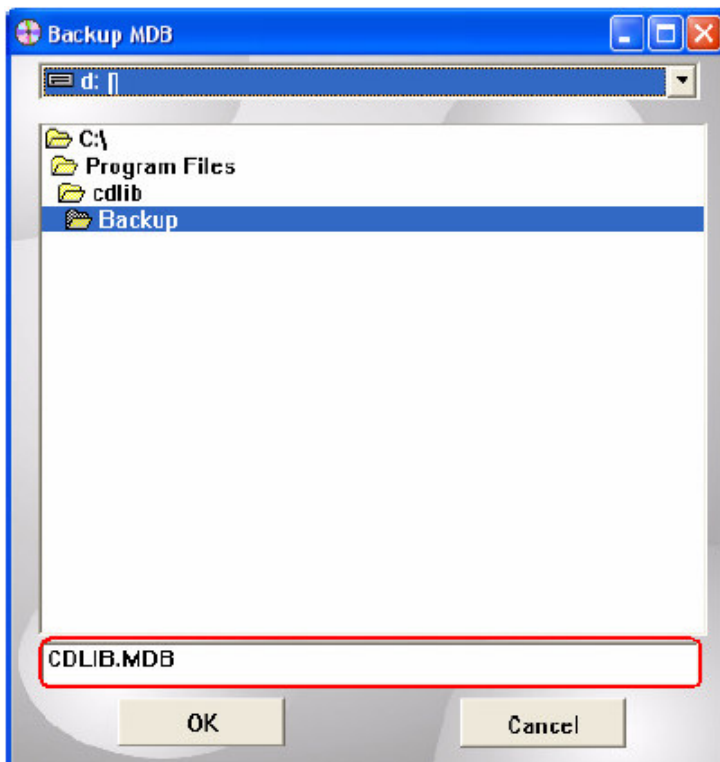


FIGURE 23. Backup MDB screen

2. Select D:\ from the drop down list and then select

Backup. A file called CDLIB.MDB is generated.

3. Click **OK** and confirm to replace old data.

Note: A new CDLIB2.MDB file is generated every time you backup new data (CD Library 5.0).

Restore Database

Select to import and restore a CD Library database.

This feature allows you to import and restore earlier database versions for use with your current product. The functions are listed as follows:

- Import *.DB (3.5 format)
- Import *.MDB (4.0 and 5.0 format)

Importing a 3.5 Database (.DB)

1. To upgrade from version 3.5 to 4.0, navigate to

File>Restore Database>Import.DB.

2. In the library folder

(C:\Program Files\CD Library\DBF), select the

CDLIB.DB to import the earlier database (see following figure).

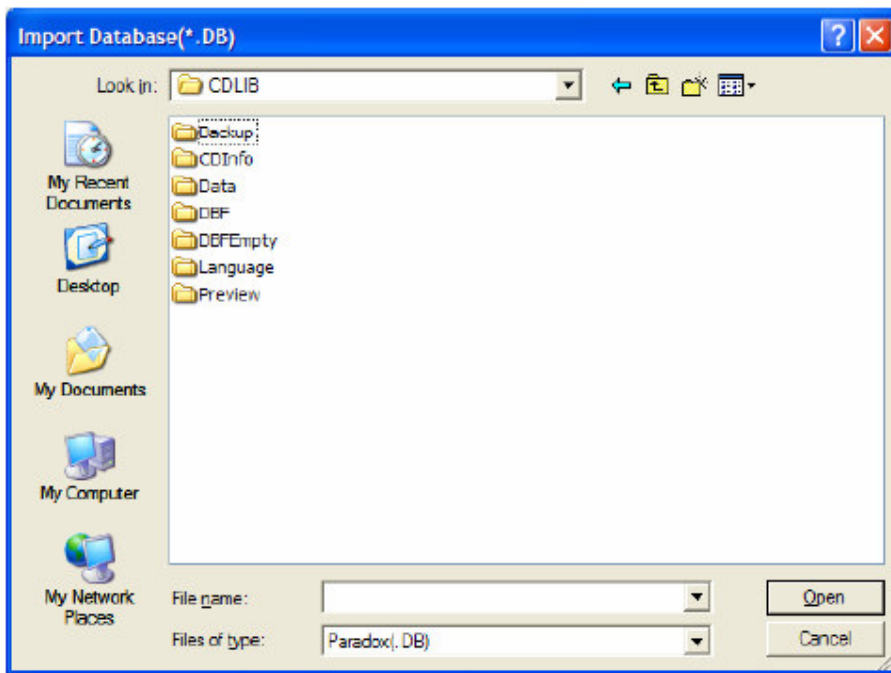


FIGURE 24. Import Database screen (*.DB)

Note: The 3.5 format is not supported by Vista and XP 64bit OS systems. Importing of a 3.5 database formats must be accomplished through the use of a 32bit OS system.

Importing a 4.0 or 5.0 Database (.MDB)

In order to import a database *.MDB, follow the steps below:

1. If **CD Library 4.0** is installed, then **CDLIB.MDB** is created in C:\Program Files\CDLIB.
If **CD Library 5.0** is installed, then **CDLIB2.MDB** is created in C:\Program Files\CDLIB.
CD Library 5.0 is able to import CDLIB.MDB and CDLIB2.MDB.

2. Navigate to **File > Restore Database** and then click **Import*.MDB**.

The Import MDB screen displays as seen in FIGURE 25.

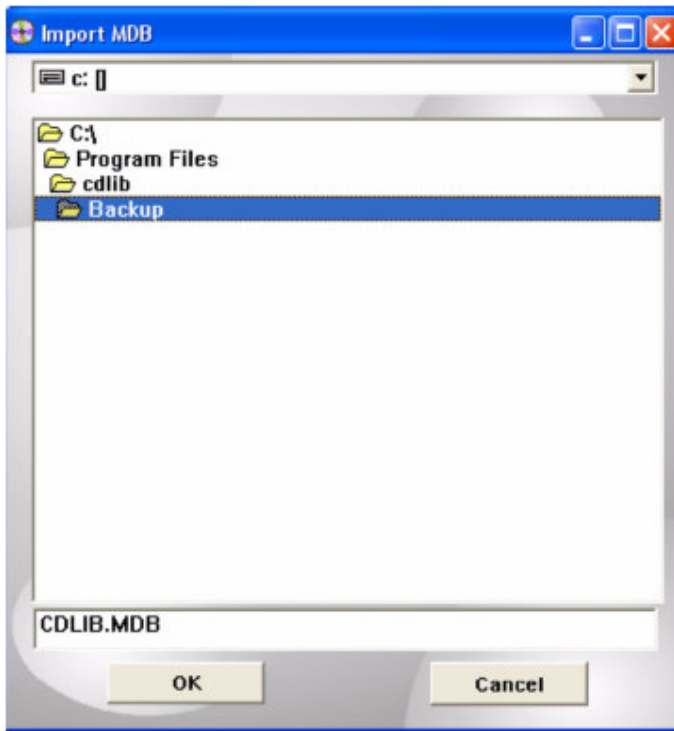


FIGURE 25. Import MDB screen

3. Select C:\ (where c: is your destination drive) from the drop-down list.

4. Click **OK** to import CDLIB.MDB or CDLIB2.MDB.

A CDLIB file is generated in

C:\Program Files\CDLIB\Backup.

User Privileges

These privileges are for **Microsoft Vista** users only.

For regular users, Windows Vista is a safer and more secure operating system than other Windows versions.

As a normal user, you can only backup your database only in C:\Program Files\CDLIB\Backup.

As an administrator, you can backup databases to any drive other than C:\Program Files\CDLIB.

Using the Software

Follow the steps below to run the software as an administrator:

1. Right click on the CD Library icon on the desktop, and select **Properties**.

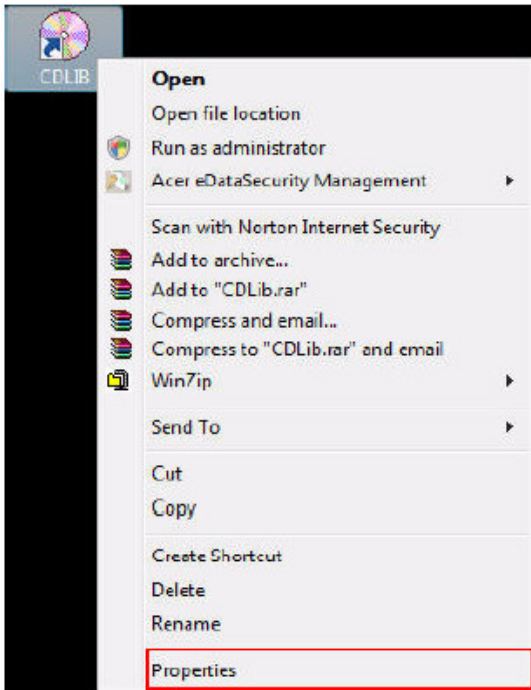


FIGURE 26. Run as administrator screen

The CDLIB properties screen displays as seen in FIGURE 27.

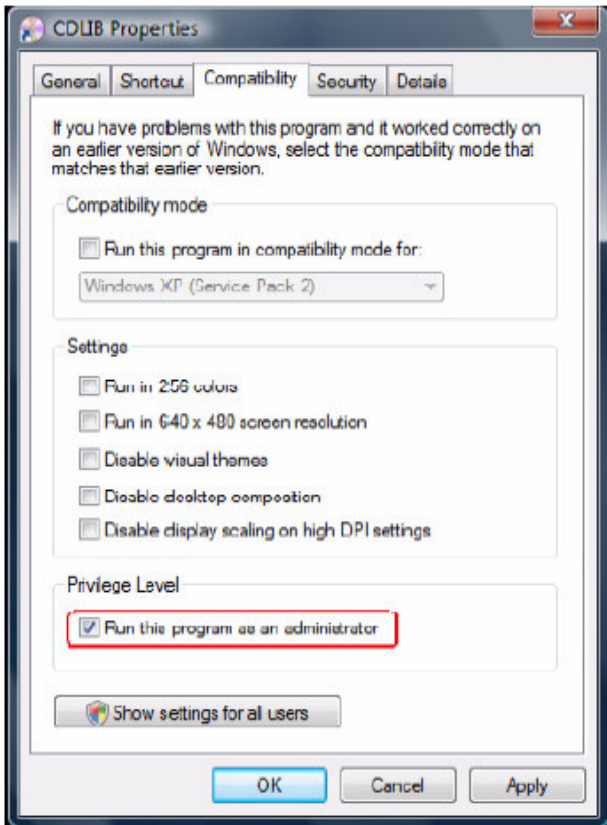


FIGURE 27. Compatibility screen

Using the Function Menu

As shown in the figure below, the **Function** tab in the **Menu**

Bar contains three options:



FIGURE 29. Function screen

Power On

Select **Power On** to power on the CD Library device.

Power Off

Select **Power Off** to power down the CD Library device.

Reset

Select **Reset** to reset the CD Library device.

Using the System Setting Menu

The System Setting menu allows for system configuration including: language, main font, e-mail settings, host address, retrieve disc log, set password, and swap machine IDs.



FIGURE 30. System Setting screen

Configuring System Setting

To configure the system settings, follow the steps below.

1. Click **System Setting** from the **Menu Bar** and then select **System Setting**.

The **Setup** dialog box displays.

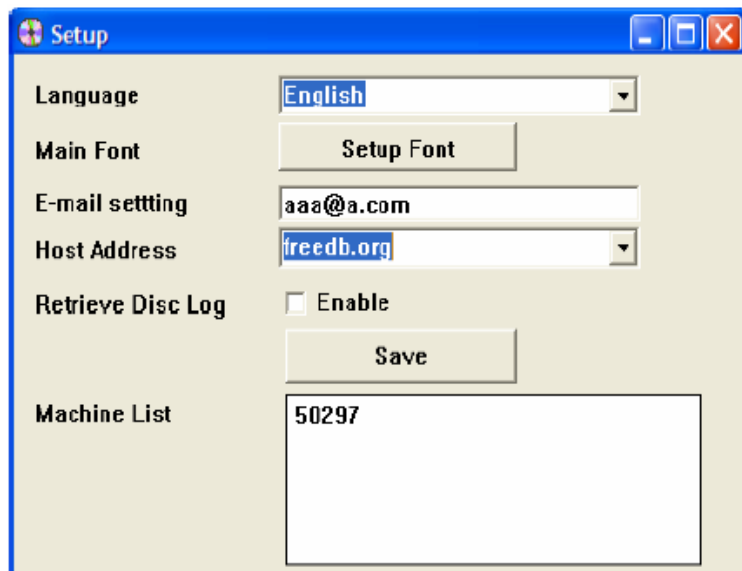


FIGURE 31. Setup screen

2. Open the **Language** drop-down list and select the desired language (default is English).

Note: For other languages see the following guidelines:

- Navigate to C:\Program Files\CDLIB\Language
- Open Language.eng, erase English and enter the language name of your choice, for example: German or French.

- Save the file as Language.ger or Language.fre
 - In the setup screen (see Figure 31. Setup screen), select the corresponding language.
3. Click **Setup Font** to define the default of the user interface. Selections available: Color, font size, and font style.
4. **E-mail Setting:** The default e-mail setting, is CDDB (Compact Disc Database) or FreeDB.
- CDDB/FreeDB: is a database for software applications to lookup audio CD information over the internet. For example: Artist name, CD title, track list and other additional information.
5. **Host Address:** The default e-mail setting, is for CDDB or FreeDB.
6. **Retrieve Disc Log:** Select this radio button to log retrieve/insert entries. The following screen displays prompting the user to enter the reason for retrieving or inserting.

Insert/Retrieve Disc

<p>CD Library machine</p> <p>Machine Name</p> <p>50297</p> <p>Slot 2</p>	<p>Operation</p> <p><input checked="" type="radio"/> Insert</p> <p><input type="radio"/> Retrieve</p>
<p>Reason of Insert/Retrieve</p> <p>Testing</p> <p>7/19/2007</p>	
<p>OK Cancel</p>	

FIGURE 32. Insert Retrieve Disc screen

- When **Retrieve Disc Log** is checked, the **Record** option in the tree directory provides further information about the log entries.



FIGURE 33. Tree Directory: Record screen

- **Machine List:** This field displays the list of CD Library devices connected to the computer.
7. Click **Save** to save your settings.

Setting a Password

1. Navigate to **System Setting** in the **Menu Bar** and then click **Password** to enter your password. The **Password** screen displays as shown below.

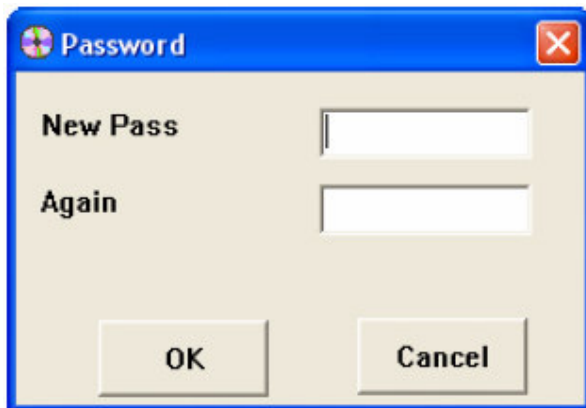


FIGURE 34. Password screen

2. Type new password and re-enter to confirm the password.
3. Click **OK** to save the password settings.

Swap ID

The CD Library device has a unique ID that lets you store CD/DVD information in the database. Navigate to **System Setting** and then select **Swap ID** to swap IDs between machines.

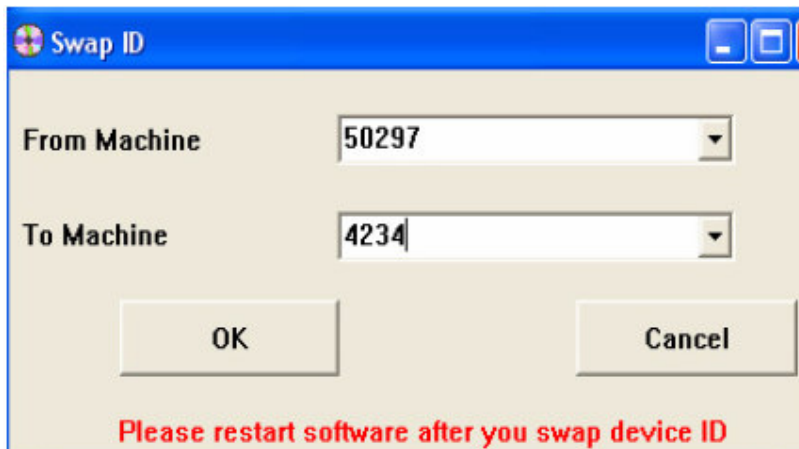


FIGURE 35. Swap ID screen

Using the Help Menu

Online help is provided for users of the CD Library software. By clicking on the Help menu, further information about the CD Library 4.0 and usage of the software is available.

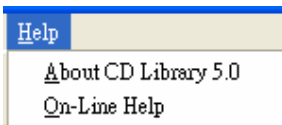



FIGURE 36. Help Menu

Using the Tool Menu

Adding a New Category

To add a new category in the CD Library follow the steps below:



1. Click  in the **Tool Bar** and a **New** category is created in the tree directory.
2. Right-click on the **New** category to view the following options:
 - Add New Disc: Add a new disc to the category.
 - Rename: Rename the category.
 - Delete Category: Delete the category.
 - Advanced Search: Search tab with advanced options.

Adding a New Disc

Prior to adding a new disc make sure to insert the disc in the CD Library device.

1. To add a new disc, click in the **Tool Bar**.

The **Add New Disc** screen displays.

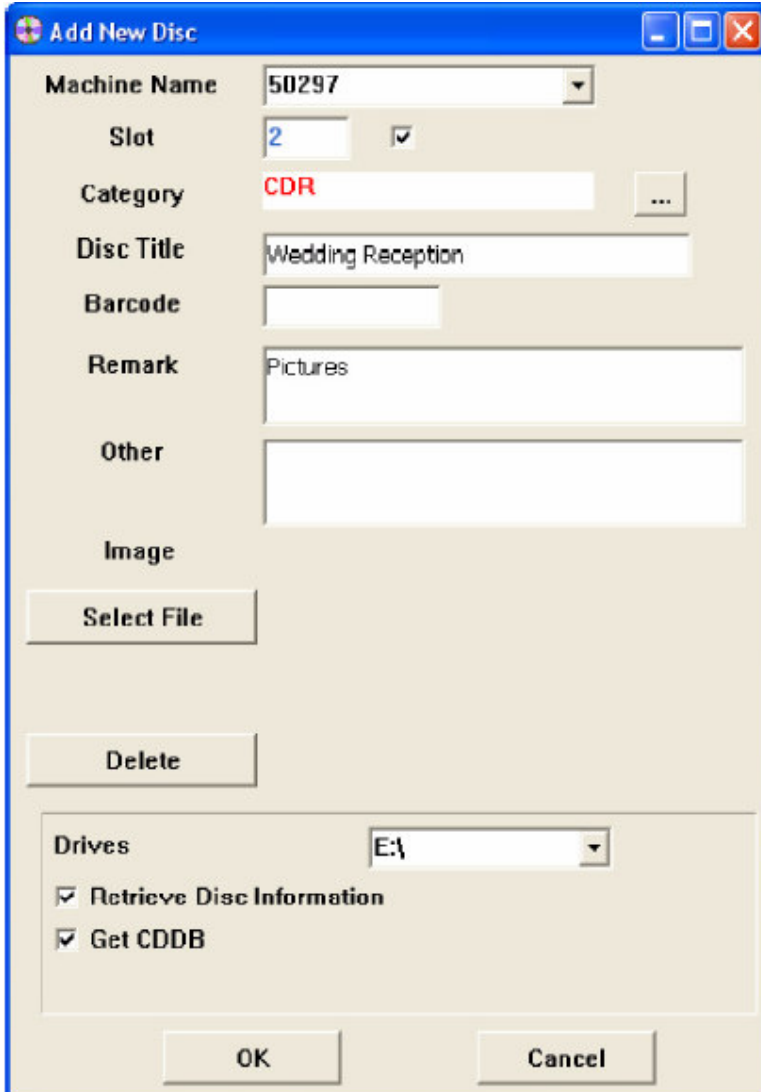



FIGURE 37. Add New Disc screen

2. Update the appropriate fields as desired.

- **Machine Name:** Select the machine name from the drop-down menu.

- **Slot:** The software updates the slot number automatically. If required, select the check box and change the slot number.

- **Category:** Click  to view the drop-down list and then double-click to select a category.
- **Disc Title:** Enter a name for the disc inserted.
- **Barcode:** Enter the barcode of the CD. The barcode is usually located on the reverse of the CD cover.
- **Remark:** Enter a note or a remark in this field. For example, "my favorite CD".
- **Other:** Enter any other information about the disc. For example, if you lend this CD to a friend, enter the date and the name of your friend in the field.
- **Image:** Click **Select File** and browse to the respective image to be inserted. Click **Delete** to remove the Image selected.
- **Drives:** The software updates the drive information. Use the default value or select an alternate drive from the list.
- **Retrieve Disc Information:** Select the check box to retrieve disc information.
- **Get CDDB:** Retrieve CDDB information from the Internet. CDDB is an online-based Compact Disc Database that downloads artist names, album titles, track names etc. from the internet.

3. Click **OK** to add the disc.

Note: To **Edit** disc information right-click on the disc in the main database area. See **page 16** for more information.

Search/Advanced Search

Search

Search for disc titles by entering the keyword in the **Search**

Data tab and the results are displayed as shown in the figure below.


Search Data			
<input type="text" value="po"/>	<input type="button" value="Clear"/>		
Disc Title	Machine Name	Slot	Category
 Apollo	DC-101 32795	10	DVD

FIGURE 38. Search Data screen

Advanced Search

The Advanced Search as seen in the figure below gives you the following options:

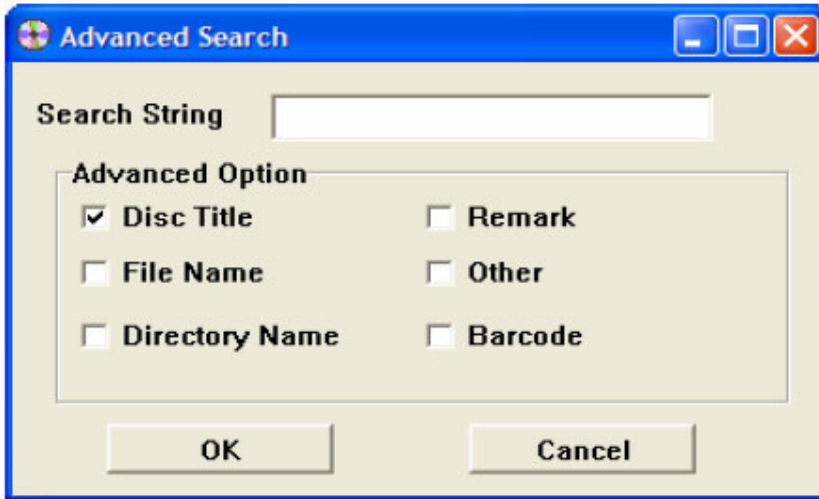


FIGURE 39. Advanced Search screen

Enter Search String and select criteria:

- Disc Title
- File Name
- Directory Name
- Remark
- Other
- Barcode

Insert/Retrieve Disc

To insert or retrieve a disc, the following options are available:

- Double click on the desired item in the main database.
- Highlight a disc from the main database area and then



Click  in the **Tool Bar** to insert/retrieve a disc.

or

- Right-click on the disc in the main database area and select **Insert/Retrieve**.


Note: Right-click on the disc and select **Remove Disc** to delete from the CD library 5.0.

Display and Mode Options


Display Options

There are three **Display** options in the **Tool Bar**: Detail, List and Icon.



Click  in the **Tool Bar** to select the options from the drop-down list.



• **Detail:** Click  from the **Display** drop-down list to view the data in detail display. The **Disc Title**, **Machine Name**, **Slot**, and **Category** are displayed in the main database area as seen in the figure below.





Disc Title	Machine Name	Slot	Category
 Music CD1	50297\	3	CDR
 Music CD2	50297\	5	SOFTWARE
 Music CD3	50297\	6	CDR

FIGURE 40. Detail screen




• **List:** Click  from the **Display** drop-down list to view the data in list display

 Music CD1
 Music CD2
 Music CD3

FIGURE 41. List screen




• **Icon:** Click  from the **Display** drop-down list to view the data in icon display.


 Music CD1
 Music CD2
 Music CD3


FIGURE 42. Icon screen

Mode Options

There are two mode options for the CD Library: By Category and By Machine.

Click  to view the drop-down list options.

• By Category  : displays the tree directory by media category.

• By Machine  : displays the tree directory by machine numbers.